

Figure 1 (A) Upper tier local authority (LA) boundaries within North West England, including the Cumbria and Lancashire region (Blackburn, Blackpool, Cumbria and Lancashire LAs). The two LAs affected by the boil water notice (Blackpool and Lancashire LAs) are shaded in blue and the location of the affected water treatment works is illustrated by a red circle. (B) Postcode districts affected by the boil water notice in Blackpool and Lancashire LAs are shaded maroon.

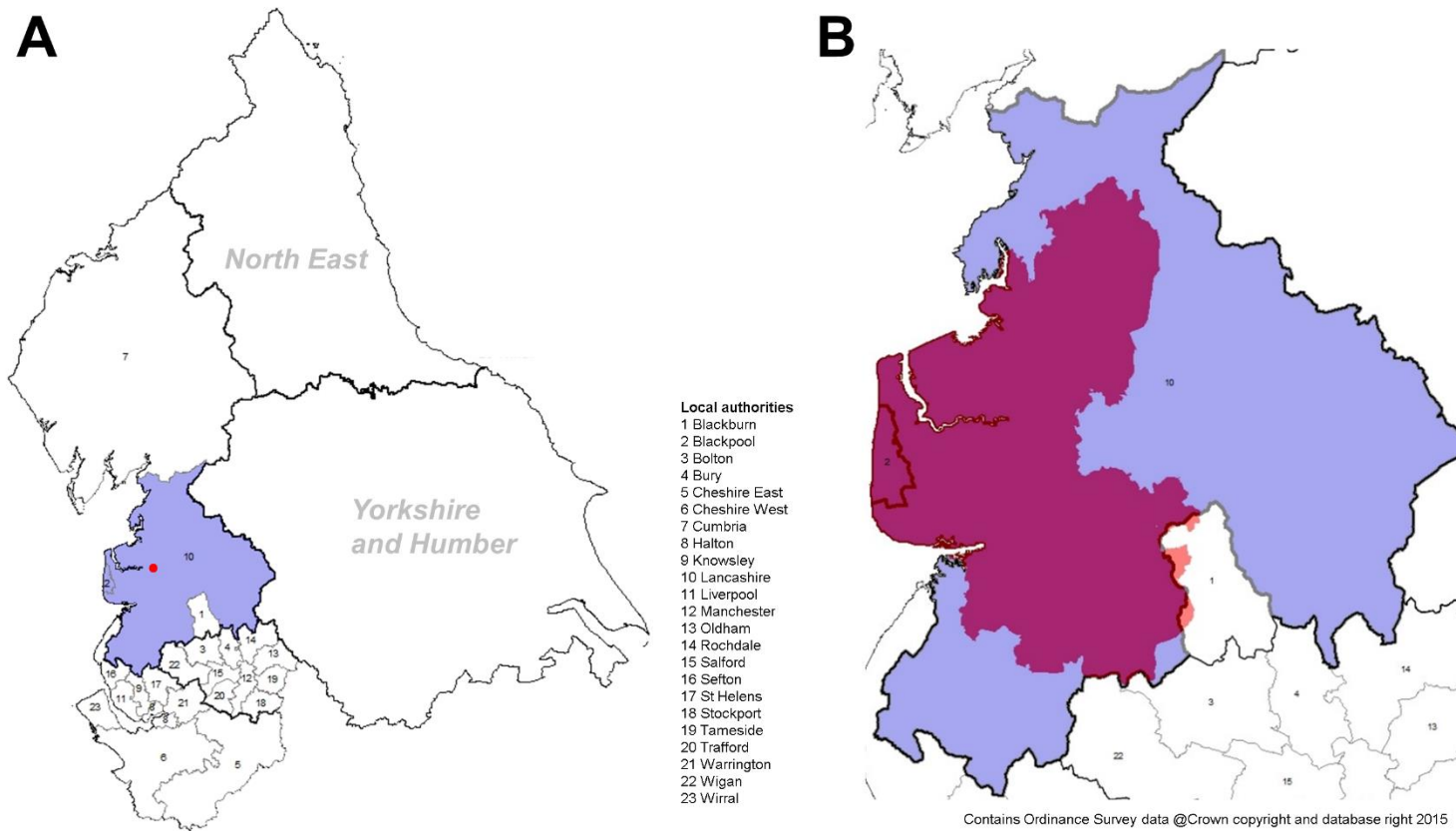


Figure 2 Daily presentation of gastroenteritis consultations to general practitioner services (in hours and out of hours) in North West England from 7/7/15 to 26/9/15

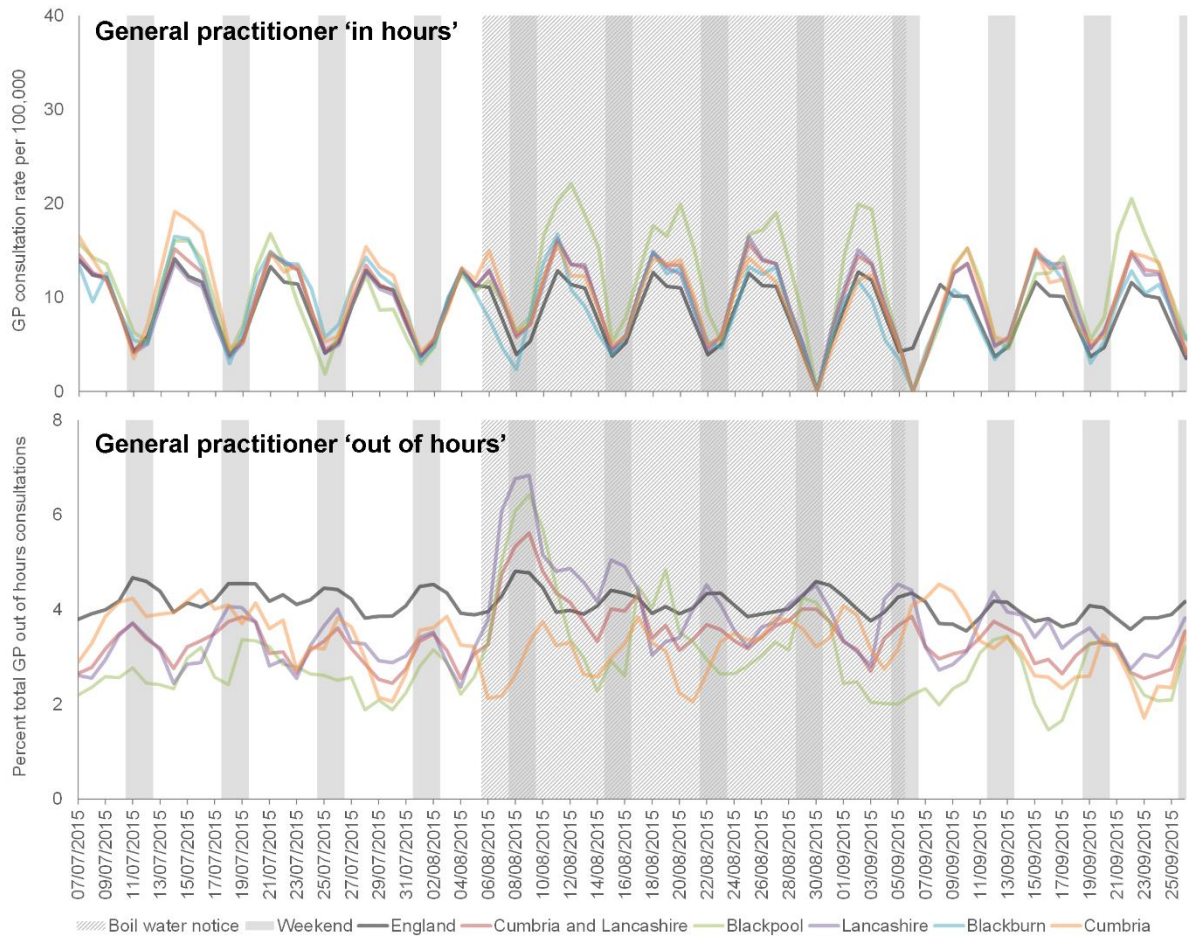


Figure 3 Daily presentation of diarrhoea GP consultations and NHS 111 calls in North West England from 7/7/15 to 26/9/15

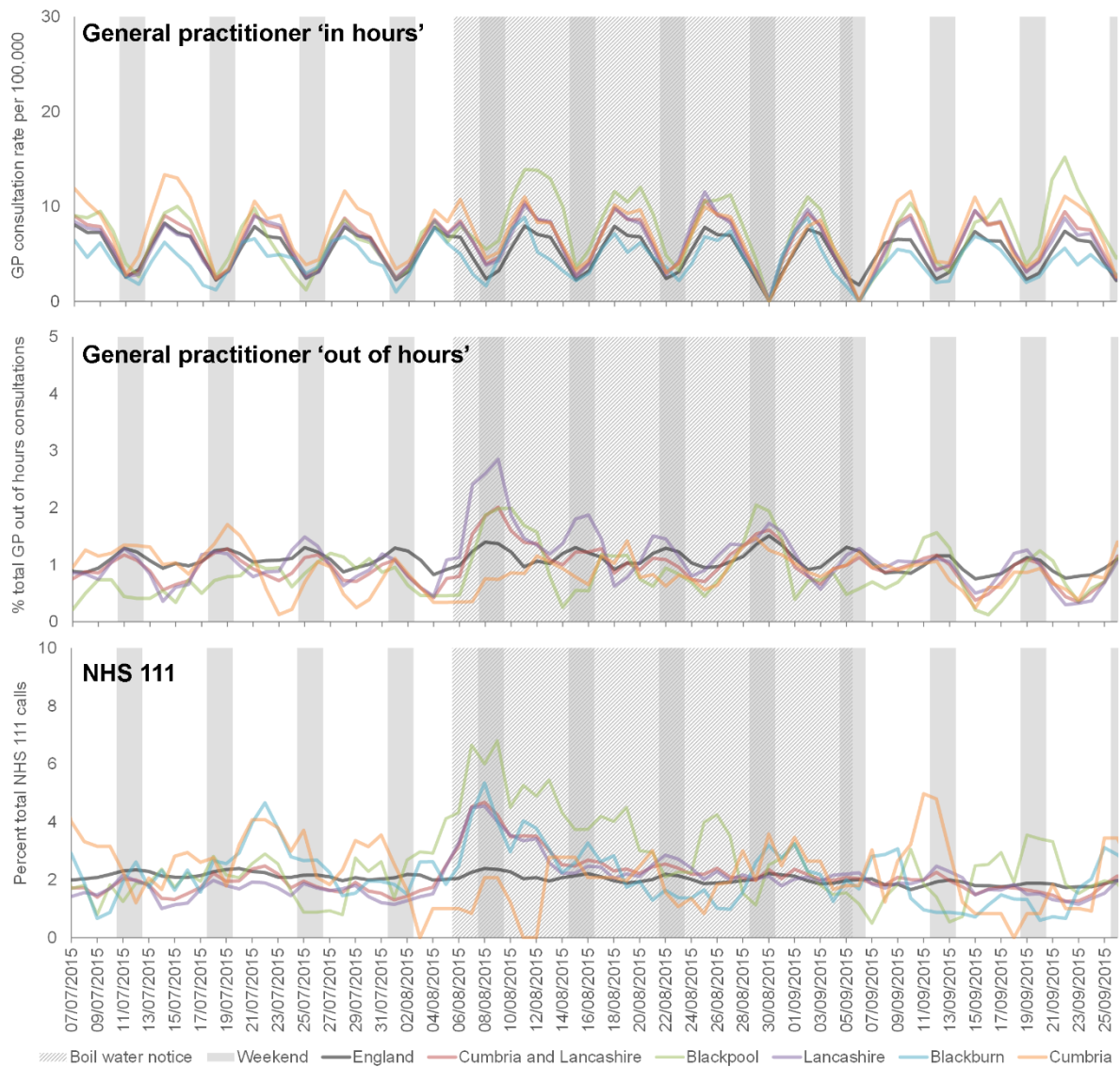


Figure 4 Daily presentation of vomiting GP consultations and NHS 111 calls in North West England from 7/7/15 to 26/9/15

