

Title: A randomised Phase II trial of Hydroxychloroquine and Imatinib versus Imatinib alone for patients with Chronic Myeloid Leukaemia in Major Cytogenetic Response with residual disease

Running title: CHOICES (CHlorOquine and Imatinib Combination to Eliminate Stem cells)

Authors: Horne GA¹, Stobo J², Kelly C², Mukhopadhyay A¹, Latif AL¹, Dixon-Hughes J², McMahon L³, Cony-Makhoul P⁴, Byrne J⁵, Smith G⁶, Koschmieder S⁷, Brümmendorf TH⁷, Schafhausen P⁸, Gallipoli P⁹, Thomson F¹⁰, Cong W¹⁰, Clark RE¹¹, Milojkovic D¹², Helgason GV¹, Foroni L¹³, Nicolini FE¹⁴, Holyoake TL^{1*}, Copland M^{1*}

Affiliation:

¹ Paul O’Gorman Leukaemia Research Centre, Institute of Cancer Sciences, University of Glasgow, Glasgow, UK

² Cancer Research UK Clinical Trials Unit, University of Glasgow, Glasgow, UK

³ Institute of Cancer Sciences, University of Glasgow, Glasgow, UK

⁴ Haematology department, CH Annecy-Genevois, Pringy, France

⁵ Department of Haematology, Nottingham City Hospital, Nottingham, UK

⁶ Department of Haematology, St James’s University Hospital, Leeds, UK

⁷ Department of Medicine (Hematology, Oncology, Hemostaseology, and Stem Cell Transplantation), Faculty of Medicine, RWTH Aachen University, Aachen, Germany

⁸ Department of Internal Medicine, University Medical Center Hamburg, Hamburg, Germany

⁹ Centre for Haemato-Oncology, Barts Cancer Institute, Queen Mary University of London, London, UK

¹⁰ Experimental therapeutics, Wolfson Wohl Cancer Research Centre, Institute of Cancer Sciences, University of Glasgow, Glasgow, UK

¹¹ Molecular and Clinical Cancer Medicine, University of Liverpool, Liverpool, UK

¹² Department of Haematology, Hammersmith Hospital, London, UK

¹³ Department of Haematology, Imperial College London, London, UK

¹⁴ Hématologie Clinique and INSERM U1052, CRCL, Centre Léon Bérard, Lyon, France

*Denotes equal contribution

Corresponding author: Professor Mhairi Copland

Address: The Paul O’Gorman Leukaemia Research Centre

Institute of Cancer Sciences, College of Medical, Veterinary and Life Sciences,
University of Glasgow
Gartnavel General Hospital
1053 Great Western Road
Glasgow, G12 0ZD

Tel: 0141 301 7880

Fax: 0141 301 7898

Email: Mhairi.Copland@glasgow.ac.uk

Word Count: 4362 words

This manuscript is dedicated to Professor Tessa Holyoake, who tragically passed away on 30th August 2017.

Abstract:

In chronic-phase chronic myeloid leukaemia (CP-CML), residual *BCR-ABL1*⁺ leukaemia stem cells are responsible for disease persistence despite TKI. Based on *in vitro* data, CHOICES (CHlorOquine and Imatinib Combination to Eliminate Stem cells) was an international, randomised phase II trial designed to study the safety and efficacy of imatinib (IM) and hydroxychloroquine (HCQ) compared to IM alone in CP-CML patients in major cytogenetic remission with residual disease detectable by qPCR. Sixty-two patients were randomly assigned to either arm. Treatment 'successes' was the primary end-point, defined as ≥ 0.5 log reduction in 12-month qPCR level from trial entry. Selected secondary study end-points were 24-month treatment 'successes', molecular response and progression at 12 and 24 months, comparison of IM levels, and achievement of blood HCQ levels $>2000\text{ng/ml}$. At 12 months, there was no difference in 'success' rate ($p=0.58$); MMR was achieved in 80% (IM) vs 92% (IM/HCQ) ($p=0.21$). At 24 months, the 'success' rate was 20.8% higher with IM/HCQ ($p=0.059$). No patients progressed. Seventeen adverse events, including four serious adverse reactions, were reported; diarrhoea occurred more frequently with combination. IM/HCQ is tolerable in CP-CML, with modest improvement in qPCR levels at 12 and 24 months, suggesting autophagy inhibition maybe of clinical value in CP-CML.

(200 words)

Chronic myeloid leukaemia (CML) is a clonal myeloproliferative neoplasm that originates from a constitutively active tyrosine kinase, BCR-ABL, resulting from a reciprocal translocation between chromosomes 9 and 22^{1, 2}. Upregulation of BCR-ABL drives disordered myelopoiesis through aberrant metabolism and expression of downstream signalling pathways^{3, 4}. Despite a targeted therapeutic approach, disease persistence is driven by a small residual *BCR-ABL1* positive (+) stem cell population⁵⁻⁹. This can lead to disease progression to the more acute form, termed blast crisis, which carries a very poor prognosis¹⁰. Measures to enhance the elimination of residual disease are therefore required to further improve outcomes and increase the number of patients obtaining deep molecular remission (DMR; defined as ≥ 4 -log reduction in *BCR-ABL* transcript levels) who can be considered for discontinuation of TKI treatment and long-lasting treatment-free remission (TFR)¹¹⁻¹³.

Autophagy, an evolutionarily conserved catabolic process¹⁴, is induced following *in vitro* tyrosine kinase inhibition (TKI) of primitive CML cells¹⁵. While autophagy has been shown to suppress cancer initiation in mouse models, an increasing amount of evidence suggests it plays a critical pro-survival role following therapeutic stress¹⁶. Furthermore, pharmacological autophagy inhibition, using the non-specific autophagy inhibitor, chloroquine (CQ), enhances the effect of TKI on functionally defined CML stem cells compared to Imatinib (IM) or CQ alone¹⁵.

Based on these findings, we designed the CHOICES (CHlorOquine and Imatinib Combination to Eliminate Stem cells) trial (NCT01227135); a randomised, open-label, phase II clinical trial comparing the combination of IM and hydroxychloroquine (HCQ) with standard-of-care IM in chronic phase (CP)-CML patients in major cytogenetic response (MCyR) with residual disease detectable by qPCR after at least one year of IM treatment. This is the first clinical trial of autophagy inhibition in leukaemia and provides

a proof-of-concept for further development and testing of more potent and/or specific autophagy inhibitors for use in future leukaemia trials¹⁷.

Methods:

Patients:

Eligible patients were 18 years or older with CP-CML. Patients had been treated with, and tolerated, IM for more than 12 months, achieved at least MCyR and remained *BCR-ABL*+ by qPCR. A stable dose of IM for 6 months prior to study entry was a prerequisite. Eligible patients had an Eastern Cooperative Oncology Group (ECOG) performance status (PS) of 0 to 2 and adequate end-organ and marrow function, with no uncontrolled significant illness. Informed consent was obtained in accordance with the Declaration of Helsinki and with approval from Greater Glasgow and Clyde NHS Trust Ethics Committee. The “Hospices Civils de Lyon” (Lyon, France) were the sponsors within France. Following enrolment, the Cancer Research UK Clinical Trials Unit, Glasgow, were contacted to verify eligibility and undertake randomisation. Exclusion criteria are listed in table 1.

Study Design and Objectives:

This was an international multicenter, two-arm parallel, open-label, randomised phase II trial with a safety run-in, designed to study the safety and efficacy of HCQ in combination with IM (NCT01227135). Patients were randomly assigned at a one-to-one allocation ratio to IM in combination with HCQ (IM/HCQ) or IM alone. Random assignment was stratified using a minimisation algorithm, incorporating the following factors:

- Baseline PCR level (<3 logs below baseline, ≥3 logs below baseline)
- Time on IM (12-24 months, 24 - <36 months, ≥36 months)
- Daily IM dose (<400mg, 400 - <600mg, 600 - 800mg)
- Site

All patients continued once daily dosing of IM throughout the 24-month study period. Patients on the IM/HCQ arm received a maximum of 12 four-weekly cycles of combination treatment (48 weeks). Patients were followed-up for a further 12 cycles, taking each patient’s total study participation to a

maximum of 96 weeks. Orally administered HCQ was started at 800mg/day as 400mg twice daily. In the case of missed doses, patients were advised to take the drug on the same day if within 6 hours, or the dose was withheld until the next scheduled dose. For dose reduction, 600mg/day was divided into 400mg every morning and 200mg every night, and 400mg/day into 200mg twice daily. Recruitment was temporarily stopped for 6 weeks once 6 patients were randomly allocated to IM/HCQ to monitor for evidence of any dose limiting toxicity (DLT). DLT was defined as i) any grade 3 or 4 non-haematological toxicity that was/possibly was attributed to the study drug, excluding grade 3 nausea, vomiting and diarrhoea controllable by concomitant therapy, or ii) any grade 3 or 4 haematological toxicity that could not be corrected by granulocyte colony-stimulating factor.

Definitions of end points:

The primary study end-point was the proportion of treatment ‘successes’, defined as patients who had ≥ 0.5 log reduction (approximately 3-fold reduction) in their 12-month *BCR-ABL1* qPCR levels from trial entry. Patients who withdrew before the 12-month assessment or who had an increase in IM dose prior to the assessment were classified as treatment ‘failures’ in the primary end-point analysis. To avoid bias in the primary endpoint, the assessment of qPCR levels was performed blind to the study treatment allocation. The secondary study end-points were the proportion of treatment ‘successes’ at 24 months, molecular response at 12 and 24 months, comparison of IM levels (using metabolite CGP-74588) between study arms at 12 and 24 months (supplemental methods), and the proportion of patients who achieved therapeutic whole blood HCQ levels $>2000\text{ng/ml}$ at 12 and 24 months (supplemental methods). Patients who withdrew prior to 24 months were classified as treatment ‘failures’ in secondary end-point analyses (figure 1).

***BCR-ABL1* detection:**

Monitoring for *BCR-ABL1:ABL1* was performed centrally at Imperial Molecular Pathology Laboratory, London, and all *BCR-ABL1:ABL1* ratios were expressed according to the international scale (IS). Baseline

BCR-ABL1:ABL1 was documented from local laboratory analysis (table 2) and repeated centrally to enable subsequent longitudinal analysis of response. MMR was defined as 0.1%^(IS) or lower, with 10,000 or more *ABL1* control transcripts.

Statistical method:

Using retrospective study data¹⁸, approximately 30% of patients fulfilling the entry criteria were expected to obtain a ≥ 0.5 log decrease in *BCR-ABL1* qPCR levels after 12 months of IM treatment (treatment 'success'). To detect an increase in the proportion of treatment 'successes' from 30% to 50% required 33 patients per arm (80% power, 20% 1-sided level of statistical significance). Randomisation was undertaken centrally using a computerised algorithm, which incorporated a random element to remove predictability and ensure groups were well-matched, using a minimisation approach (described above). At the end of the randomisation process, the patient's treatment allocation and unique identifier were generated.

Analyses were performed using SPSS 22.0.0.0 (SPSS, Chicago, IL) and were conducted on an intention-to-treat (ITT) basis. The comparisons between the study arms of "successes"/"failures", progression, and molecular response rates used Fisher's exact test. 95% confidence intervals for the difference in proportions were calculated using method 10 in RG Newcombe¹⁹. Molecular response rates, IM plasma levels and the most severe common terminology criteria of adverse events (CTCAE v4.0) grade observed per patient for individual adverse events over the 12-month study period and the 12-month follow-up period were compared between the study arms using the Mann-Whitney U test. Statistical analyses of *in vitro* data and continuous *BCR-ABL1:ABL1* qPCR data were performed using the 'NADA' package in R (v3.3.3) to allow interpretation of values below the limit of detection^{20, 21}. Adjustments for multiple testing were made, where appropriate, using the false discovery rate (FDR) approach²², using the p.adjust function ('fdr' option) in R.

Results:

Patient characteristics:

From 22 April 2010 to 31 December 2014, 62 patients were randomly assigned to IM (n=30) or IM/HCQ (n=32). Demographic characteristics were similar between arms (table 2). Pre-treatment peripheral blood (PB) qPCR was available for all patients enrolled, with median *BCR-ABL1:ABL1* ratio of 0.046% (interquartile range (IQR) 0.011% to 0.118%) in the IM arm, and 0.034% (IQR 0.012% to 0.047%) in the IM/HCQ arm. Duration of IM prior to study entry was similar. Additional chromosomal abnormalities within the Philadelphia + clone were identified at CML diagnosis in 2 patients in the IM arm (one with a variant Philadelphia chromosomal translocation and one with deletion of chromosome 12), and 3 in the IM/HCQ arm (trisomy 21, deletion of chromosome 9, and a double Philadelphia chromosome abnormality). One patient in the IM arm withdrew from the trial prior to trial initiation and received no treatment on study; 6 patients withdrew consent during the study (figure 1). Patients were followed-up for a minimum of 24 months.

Molecular efficacy:

No statistical difference was demonstrated in 'success' rate between arms at 12 months (1.2% lower with IM/HCQ vs IM; 95% CI 21.1% lower to 18.4% higher; 1-sided p=0.58; 2-sided p=0.99) (table 3). Patients who withdrew before the 12-month assessment (n=11) or who had an increase in IM dose prior to the assessment (n=1) were classified as 'failures' (n=5 with IM; n=7 with IM/HCQ), which may account for this. At 12 months, MMR was achieved/maintained in 66.7% on IM versus 71.9% on IM/HCQ (5.2% higher in the IM/HCQ arm; 95% CI: 17.1% lower to 27.1% higher; 1-sided p=0.43; 2-sided p=0.78).

At 24 months, 'success' rate in the IM/HCQ arm was 20.8% higher than the IM arm (95% CI: 1.5% lower to 40.4% higher; 1-sided p = 0.059; 2-sided p = 0.090). Patients with a sample approximately 90 days prior to the expected 24-month time point, or at any time after, were eligible for analysis, with the closest sample to the scheduled 24-month date (before or after) chosen. The numbers classed as

‘failures’ due to failure to achieve the appropriate log reduction in *BCR-ABL1:ABL1*¹⁵ within the acceptable window of the 24-month expected assessment time was higher with IM (n=19; 76%) compared to IM/HCQ (n=13; 65.0%). At 24 months, DMR/MMR was achieved/maintained in 66.7% with IM, and 75.0% with IM/HCQ (8.3% higher in the IM/HCQ arm; 95% CI: 13.8% lower to 29.7% higher). There was a slight, but not significant, difference in rates of molecular response between the arms (1-sided p=0.33; 2-sided p=0.58) at the 1-sided 20% significance level. There was no significant difference between depth of molecular response at 12 or 24 months. No confirmed or suspected progressions at any time during the study were identified.

In view of the variation of *BCR-ABL1:ABL1* ratio between patients (table 2) at trial entry, a post hoc analysis was performed using the median *BCR-ABL1:ABL1* ratio (0.0305%) to determine sub-groups of ‘high’ and ‘low’ *BCR-ABL1:ABL1* expression at trial entry. MMR was not used as this led to a significant imbalance in subgroup sizes between the arms and would not have been informative. In the imatinib only arm, 24/30 patients were in MMR or better, and 6/30 not in MMR; in the IM/HCQ arm, 28/30 patients were in MMR, and 5 were not in MMR. At 12 months, within the high baseline group, the ‘success’ rate in the IM/HCQ arm was 4.7% higher than in the IM alone arm (95% CI: 26.5% lower to 32.2% higher; unadjusted 2-sided p-value > 0.99; FDR adjusted 2-sided p-value > 0.99), and within the low baseline BCR-ABL group, the ‘success’ rate in the IM+HCQ arm is 10.5% lower than in the IM alone arm (95% CI: 34.6% lower to 16.4% higher; unadjusted 2-sided p-value = 0.61; FDR adjusted 2-sided p-value > 0.99). At 24 months, this difference is more striking, and the ‘success’ rate in the IM+HCQ arm is 34.6% higher than in the IM alone arm in those with high baseline BCR-ABL (95% CI: 0.5% higher to 58.3% higher; unadjusted 2-sided p-value = 0.066; FDR adjusted 2-sided p-value = 0.26), and 3.8% higher in the low baseline BCR-ABL subgroup (95% CI: 23.4% lower to 32.3% higher; unadjusted 2-sided p-value > 0.99; FDR adjusted 2-sided p-value > 0.99) (figure 2). This suggests that the kinetics of response is

determined by *BCR-ABL1:ABL1* ratio at trial entry and those with higher baseline levels may benefit more from the addition of HCQ to IM.

Similarly, in a post hoc analysing utilising the median *BCR-ABL1:ABL1* ratio at trial entry, we analysed the proportion of patients achieving a deep molecular response (DMR), as defined by MR3, MR4, MR4.5, and MR5, at both 12 and 24 months. There was no significant difference in those achieving DMR between experimental arms of 'high' and 'low' *BCR-ABL1* expressors. However, there was a higher trend for achievement of DMR within the IM/HCQ arm, particularly at 24 months (table S1) where the proportion of patients in the 'high' *BCR-ABL1* subgroup achieving MR3 was 26.0% higher in the IM/HCQ arm (95% CI: 7.7% lower to 53.6% higher; unadjusted 2-sided p-value = 0.26; FDR adjusted 2-sided p-value = 0.85); MR4, 17.9% higher in the combination arm (95% CI: 13.9% lower to 43.4% higher; unadjusted 2-sided p-value = 0.41; FDR adjusted 2-sided p-value = 0.85); MR4.5, 16.7% higher in the combination arm (95% CI cannot be computed; unadjusted 2-sided p-value = 0.25; FDR adjusted 2-sided p-value = 0.85); and MR5, 11.1% higher in the combination arm (95% CI cannot be computed; unadjusted 2-sided p-value = 0.50; FDR adjusted 2-sided p-value = 0.85). Interpretation of this needs to be carefully considered as this will be underpowered by the very nature of a post hoc analysis.

Plasma levels:

To ensure that HCQ did not interfere with IM plasma levels, and that patients were achieving an adequate dosage of HCQ, plasma levels of drugs in both study arms were determined. IM plasma levels were assessed in the ITT population, excluding the 12 patients (n=6 in both arms) in the safety run-in period where blood samples were not taken, and those that withdrew consent. Plasma levels were taken 20 to 26 hours after the last dose of drug in cycles 1, 2, 4, 7, 10, and 13. There was no significant difference, with an adjustment for multiple comparisons using the FDR approach, in trough IM levels between the arms at any time-point. However, there was a trend towards increased CGP metabolite (IM metabolite) plasma levels relative to baseline at all time-points in the IM/HCQ arm compared to IM

alone. These differences reached statistical significance at the 2-sided 10% level at cycle 2 (unadjusted 2-sided $p=0.032$; FDR adjusted 2-sided $p=0.090$) and cycle 13 (unadjusted 2-sided $p=0.036$; FDR adjusted 2-sided $p=0.090$) (figure S1A).

HCQ plasma levels were aiming to achieve a trough concentration of $>2000\text{ng/ml}$ at the time points described above. Only 47.1% ($n=8/17$) achieved this trough HCQ plasma concentration at any time point during the 12 months of IM/HCQ treatment. There was no correlation between the likelihood of achieving treatment 'success' and achieving this trough HCQ concentration (figure S1B).

Autophagy inhibition was additionally determined *ex vivo* using the lipidated form of microtubule-associated protein 1 light chain 3B (*LC3B-II*) levels as a marker of autophagosomes. Bone marrow and PB samples were collected at baseline, 6 and 12 months (table S2). In line with recent findings demonstrating increased autophagy flow in primitive CML cells²³, the number of *LC3B-II* puncta was significantly increased in BM derived CD34+ samples, when compared with PB mononuclear cells ($p=0.002$) (figure S2A). *LC3B-II* puncta were often undetectable in PB and, as expected, *ex vivo* HCQ treatment was required to determine *LC3B-II* expression (figure S2B). We demonstrated no linear correlation with trough IM/HCQ levels and degree of *LC3B-II* levels (data not shown). We did not demonstrate a reduction in colony-forming cell or long-term culture-initiating cell potentiation with IM/HCQ compared with IM alone (figure S2C, D).

Safety analysis:

Recruitment was temporarily stopped for 6 weeks once 6 patients were randomly allocated to IM/HCQ to monitor for evidence of DLTs. No evidence of toxicity at a dose of HCQ 800mg/day was determined. Toxicity was graded according to the CTCAE v4.0, and the worst grade determined for each patient in the first 12 months of treatment (figure 3A) and the 12 months follow-up (figure 3B). Treatment was generally well tolerated. During treatment, 4/29 treated patients developed hyponatraemia with IM (3

at grade 3 [1 present at grade 1 pre-treatment] and 1 grade 1), compared with 0/32 on IM/Hcq (p=0.031). Diarrhoea was more common, with higher CTCAE grade, in the IM/Hcq arm with 21/32 patients affected (10 grade 1, 8 grade 2, and 3 grade 3) compared with 7/29 patients on IM alone (6 grade 1 and 1 grade 2; p = 0.00031). Grade 1 musculoskeletal problems were seen with IM (n=8), but not with IM/Hcq (p=0.0015). There were no cases of retinopathy documented within the IM/Hcq cohort.

During the trial period, 17 serious adverse events (SAEs) were reported; four were considered serious adverse reactions (SARs). Within the IM arm, dyspepsia was reported. Three SARs occurred in the IM/Hcq arm, and included one case each of cardiac rhythm disorder, dyspnoea, and heart failure. Cardiac function fully recovered following discontinuation of Hcq in the patient with heart failure.

No dose reductions for IM were recorded for any patients during the study. Eleven patients (n=4 on IM, and n=7 on IM/Hcq) discontinued with 'on trial' IM treatment. The reasons included consent withdrawal (n=6), rising *BCR-ABL1* (n=2), sub-optimal IM plasma levels (n=1), patient choice (n=1 on IM/Hcq), and other medical conditions (depression CTCAE grade 2, n=1). Within the IM/Hcq arm, 6 patients had a total of 8 Hcq dose reductions (4 patients had 1 reduction, 2 patients had 2 reductions). Dose reductions were related to diarrhoea (n=5), fatigue (n=2), and patient choice (n=1). Twenty-five patients completed the 12 cycles of Hcq. Seven patients stopped Hcq before the end of the scheduled 12 cycles, due to withdrawing consent (n=4), treatment-related toxicity (depression and insomnia (both CTCAE grade 2), n=2) and rising *BCR-ABL1* (n=1). Overall the IM/Hcq combination was safe and well tolerated and side effects were manageable.

Discussion:

It has been estimated that 30% of patients on TKI therapy fail to achieve a major molecular response at 2 years²⁴. Furthermore, the incidence of progression to blast crisis under TKI treatment ranges between 0.7 and 4.5% per annum²⁵⁻²⁷. One mechanism postulated to contribute to this lack of TKI response is the phenomenon of disease persistence, which suggests that despite a targeted therapeutic approach, BCR-ABL-independent mechanisms are being exploited to sustain the survival of CML LSCs^{5, 28, 29}. Autophagy has emerged as a critical factor in resistance to a number of chemotherapeutic agents and is an attractive approach in targeting CP-CML LSCs^{15, 16}. In CML, reports suggest that BCR-ABL is a negative regulator of autophagy, with autophagy being induced following *in vitro* TKI treatment, and *in vitro* pharmacological autophagy inhibition enhances the effect of TKI on functionally defined CML stem cells^{15, 30}. Other studies have demonstrated that BCR-ABL promotes autophagosome formation and that autophagy is essential for BCR-ABL-dependent leukemogenesis^{31, 32}, suggesting that BCR-ABL may affect autophagy differently during malignant transformation and progression, as has been suggested in other malignancies³³. Together, this suggests that combination treatment with TKI and autophagy inhibition may lead to higher rates of sustained molecular response and reduced rates of molecular and clinical progression.

This phase II clinical trial was designed to compare the combination of IM and HCQ, with standard-of-care IM in CP-CML patients in MCyR with residual disease detected by qPCR. IM was used as, internationally, it remains the most commonly administered first-line therapy in CP-CML, and at the time of trial opening in 2010 and during early recruitment, it was the only approved TKI for first-line therapy in the UK. To date, and to our knowledge, this has been the largest autophagy trial in any malignancy and the first in leukaemia.

285

286 The primary study end-point was defined as patients who had ≥ 0.5 log reduction in their 12-month *BCR-*
287 *ABL1* qPCR levels from trial entry ('successes'). This endpoint is not conventionally used as a criterion
288 clinically to evaluate efficacy of treatment response in a CML population. However, it is well
289 documented that in CML patients with an IM-induced complete cytogenetic response, a minimum of a
290 half-log increase in BCR-ABL RNA (including loss of MMR) is a significant risk factor for future loss of
291 complete cytogenetic response³⁴. It was, therefore, felt that a reduction of this magnitude would be
292 clinically significant. There was no statistical difference in 'success' rates between IM and IM/Hcq arms
293 at 12 months. However, there was an increasing trend towards MMR in the IM/Hcq arm, and the
294 number of 'successes' was 20.8% higher with IM/Hcq at 24 months (1-sided $p=0.059$ 2-sided $p = 0.090$).

295 A major difficulty in the interpretation of combination treatment efficacy is the significant heterogeneity
296 of *BCR-ABL1:ABL1* transcripts at trial entry in both experimental arms, despite the depth of response
297 being taken into consideration during the randomisation process. This is particularly relevant in view of
298 the kinetic response that exists during TKI therapy, with a steeper slope and 'faster' kinetics noted until
299 MMR is achieved. At trial entry, 47.2% and 31.3% of patients were not in MMR in IM and IM/Hcq arms,
300 respectively. As stated above, however, combination treatment demonstrated a higher proportion of
301 treatment 'successes', which is therefore likely to represent clinical significance. To evaluate this
302 further, in a post hoc analysis, we demonstrated that those patients with 'high' expression of *BCR-ABL1*
303 (defined as $>0.0305\%$, as based on the median level at trial entry) in the combination treatment arm
304 were more likely to achieve both treatment 'success' and DMR at 12 and 24 months, suggesting that
305 further research into autophagy inhibition in combination with TKI is warranted in those patients not
306 achieving optimal treatment milestones on TKI alone.

Our results demonstrate that there may be a clinical advantage for 48 weeks IM/HCQ treatment on prolonged follow-up, with greatest effect noted at 24 months. This is intriguing as patients at 24 months were no longer taking combination treatment, suggesting that the effect of autophagy inhibition was long-lasting. We could hypothesise that this is due to alterations in the quiescent phenotype of the CML LSC leading to greater TKI response with prolonged use. This is similar to other trials targeting CML-LSCs where deeper and significant *BCR-ABL1* transcript response was seen on prolonged follow-up (5 years)³⁵. However, we did not establish autophagy inhibition in *in vitro* assays at 12 or 24 months, and in future work in this field, perhaps extending *ex vivo* assays to later timepoints, as well as including alternative cellular mechanisms, such as senescence, could be considered to more clearly define the changes in the functional properties of CML stem cells as a result of prolonged treatment of patients with autophagy inhibitors and continuing subsequent therapies.

As this was a randomised phase II trial, albeit with relatively small sample size, small treatment improvements will not be detected, and therefore the increasing trend towards MMR could be clinically significant. Furthermore, as described above, differences in TKI kinetic response needs to be considered in future clinical trials in this field, as well as the challenges in recruitment and trial dropouts (or 'failures') which meant the power to drive a robust statistical response was not achieved. There are increasing barriers in recruitment to CP-CML studies. Firstly, this is generally a 'well' population, who tolerates TKI treatment, has few follow-up appointments, and is challenged with a low rate of progression. Clinical trials in CP-CML confer increased hospital attendance, with more procedures, including bone marrow aspirates that are psychologically unappealing. However, as demonstrated by the frequent molecular recurrence seen in patients attempting TFR^{11, 12, 36, 37}, there is an unmet clinical need to develop therapies capable of targeting the CML LSC which is believed to be the cause of molecular recurrence, and enable more patients to obtain DMR and successfully maintain TFR.

Importantly, the combination of IM/HCQ was well tolerated and no DLTs were observed, although increased numbers of patients developed grade 1-3 diarrhoea, consistent with previous clinical trials using HCQ³⁸⁻⁴¹. Diarrhoea and fatigue were the main reasons for dose reduction of HCQ, both recognised adverse effects^{39, 42}. Interestingly, compared with IM alone, no patients developed musculoskeletal AEs with IM/HCQ compared with 8/29 on IM, in keeping with its known clinical utility in rheumatological disorders⁴³. To our surprise, 4/29 patients developed hyponatraemia with IM alone. Although not identified as a significant toxicity in the IRIS clinical trial (NCT00006343)⁴⁴, hyponatraemia is recognised as an uncommon adverse event (>1:1000 to < 1:100) of imatinib therapy⁴⁵.

Measuring autophagy flux accurately in PB is difficult, and functional assessment is therefore problematic. Plasma levels of HCQ were taken to determine therapeutic dosing, with target trough levels >2000ng/ml. However, very recently published *in vitro* data from our group indicates that even if this was accomplished, at this trough concentration (equivalent to 5.9µM) complete autophagy inhibition may not be achieved²³. This data was not available when the trial was conducted. Furthermore, consistent HCQ plasma concentrations were not achieved within our trial population and large interpatient variability in HCQ levels has been demonstrated in a recent clinical trial, in combination with everolimus, in renal cell cancer³⁸. Together, this perhaps explains the lack of correlation with *in vitro* assessment; an issue that has been previously demonstrated within solid tumours⁴⁶⁻⁴⁸. A major drawback to HCQ dose optimisation and ultimate achievement of autophagy inhibition is the risk of adverse effects when using higher doses for longer durations, particularly retinopathy^{39, 49}. Retinopathy is unlikely to occur with dosages less than 6.5mg/kg/day within the first 10 years of therapy⁴⁰; we demonstrated no cases of retinopathy.

To overcome both inconsistent autophagy inhibition and mitigation of side effects, more potent and specific autophagy inhibitors are required. These are beginning to be assessed in pre-clinical models^{23, 50, 51}. CQ derivatives, such as Lys05, have been shown to be 3- to 10-fold more potent and have good effect in CML models. Within murine models, however, higher doses, led to Paneth cell dysfunction and intestinal obstruction^{23, 51}. As yet, these have not been translated to clinical trial.

We conclude that while HCQ (at 400-800mg daily) in combination with IM is a safe and tolerable treatment option in CP-CML, the primary endpoint of this study was not met, in part due to difficulties in recruitment and retention within the trial and in part due to failure to achieve adequate HCQ plasma levels. Our study suggests that clinically achievable doses of HCQ are unlikely to achieve a sufficient trough plasma concentration to accomplish meaningful autophagy inhibition. However, with more potent and specific autophagy inhibitors on the horizon and in preclinical development, this may be worth pursuing in future clinical trials with the aim to eradicate the CP-CML LSC.

378
379
380
381
382
383
384
385
386
387
388
389
390
391
392
393
394
395
396
397
398
399
400

Acknowledgements

This manuscript is dedicated to Professor Tessa Holyoake (1963-2017) who was instrumental in its concept, development and delivery. The study was funded by the Medical Research Council, grant number G0900882. This study was supported by the Glasgow Experimental Cancer Medicine Centre, which is funded by Cancer Research UK and the Chief Scientist’s Office, Scotland. Cell sorting facilities were funded by the Kay Kendall Leukaemia Fund (KKL501) and the Howat Foundation. We thank the site coordinators of the study and the participants. We thank Drs David Irvine and Susan Rhodes (Beatson West of Scotland Cancer Centre, Glasgow) for consenting and processing patient samples, and Drs Bruno Calabretta (Philadelphia University) and Paolo Salomoni (DZNE, German Centre for Neurogenerative Diseases) for useful discussions. Processing of samples was performed by Dr Alan Hair and Dr Heather Jorgenson (Paul O’Gorman Leukaemia Research Centre, University of Glasgow). FACS was performed by Miss Jennifer Cassels (Paul O’Gorman Leukaemia Research Centre, University of Glasgow). We thank Kim Appleton and Chantevy Pou in the development and contribution to the HCQ PK studies (University of Glasgow). We also thank Alison Holcroft (University of Liverpool) for carrying out the plasma imatinib levels. Dr Franck Nicolini acknowledges the work, the constant administrative help and data capture for French patients of Mrs Madeleine Etienne, CRA, hematology department, Centre Hospitalier Lyon Sud, Pierre Bénite, France and of Ms Clémence Van Boxsom, CRA, Délégation à la recherche Clinique of the Hospices Civils de Lyon, Lyon.

Competing Interests

ALL: honoraria (Kite a Gliead Company), speakers bureau (Kite a Gliead Company) and consulting or advisory role (Jazz Pharmaceuticals). JB: honoraria (Novartis, Pfizer) and speakers bureau (Novartis, Pfizer, Jazz Pharmaceuticals, Alexion). GS: research funding (Novartis, Pfizer, Ariad). SK: honoraria (Novartis, BMS, Pfizer, Incyte, Roche, AOP Pharma, Janssen, Bayer) and consulting or advisory role (Pfizer, Incyte, Novartis, AOP Pharma, BMS, CTI, Roche, Bayer). SK: research funding (Novartis, BMS, Janssen). THB: consulting or advisory role (Novartis, Pfizer, Janssen, Merck, Takeda) and research funding (Novartis, Pfizer). PS: honoraria (BMS, Novartis, Alexion, MerckSerono, Pfizer, MSD, Roche, Gilead) and consulting or advisory role (BMS, Novartis, Merck Serono, Alexion, Pfizer). PG: honoraria (BMS). FT: consulting or advisory role (bionomics) and research funding (Roche, Lilly, AstraZeneca). REC: honoraria (Novartis, Pfizer, BMS), consulting or advisory role (Novartis, Pfizer, Jazz pharmaceuticals, Abbvie) and research funding (Novarits, BMS). DM: consultancy and honoraria (ARIAD, Bristol-Myers Squibb, Novartis, Pfizer, Incyte) and speakers bureau (Incyte). FEN: consulting or advisory role (Incyte, Sun Pharma Ltd) and speakers bureau (Incyte, BMS, Novartis). TLH (sadly passed away): research funding (Novartis, BMS), advisory board member (Novartis, Incyte), and honoraria (BMS, Novartis, Incyte). MC: research funding (Novartis, BMS, Cyclacel, Incyte), advisory board member (BMS, Novartis, Incyte, Pfizer), and honoraria (Astellas, BMS, Novartis, Incyte, Pfizer, Takeda, Celgene). The other authors have no competing financial interests to disclose.

References

1. Rowley JD. Letter: A new consistent chromosomal abnormality in chronic myelogenous leukaemia identified by quinacrine fluorescence and Giemsa staining. *Nature* 1973 Jun 1; **243**(5405): 290-293.
2. Groffen J, Stephenson JR, Heisterkamp N, de Klein A, Bartram CR, Grosveld G. Philadelphia chromosomal breakpoints are clustered within a limited region, bcr, on chromosome 22. *Cell* 1984 Jan; **36**(1): 93-99.
3. Danial NN, Rothman P. JAK-STAT signaling activated by Abl oncogenes. *Oncogene* 2000 May 15; **19**(21): 2523-2531.
4. Kuntz EM, Baquero P, Michie AM, Dunn K, Tardito S, Holyoake TL, *et al.* Targeting mitochondrial oxidative phosphorylation eradicates therapy-resistant chronic myeloid leukemia stem cells. *Nat Med* 2017 Oct; **23**(10): 1234-1240.
5. Bhatia R, Holtz M, Niu N, Gray R, Snyder DS, Sawyers CL, *et al.* Persistence of malignant hematopoietic progenitors in chronic myelogenous leukemia patients in complete cytogenetic remission following imatinib mesylate treatment. *Blood* 2003 Jun 15; **101**(12): 4701-4707.
6. Deininger M. Stem cell persistence in chronic myeloid leukemia. *Leuk Suppl* 2012 Aug; **1**(Suppl 2): S46-48.
7. Graham SM, Jorgensen HG, Allan E, Pearson C, Alcorn MJ, Richmond L, *et al.* Primitive, quiescent, Philadelphia-positive stem cells from patients with chronic myeloid leukemia are insensitive to STI571 in vitro. *Blood* 2002 Jan 1; **99**(1): 319-325.
8. Hamilton A, Helgason GV, Schemionek M, Zhang B, Myssina S, Allan EK, *et al.* Chronic myeloid leukemia stem cells are not dependent on Bcr-Abl kinase activity for their survival. *Blood* 2012 Feb 9; **119**(6): 1501-1510.

9. Corbin AS, Agarwal A, Loriaux M, Cortes J, Deininger MW, Druker BJ. Human chronic myeloid leukemia stem cells are insensitive to imatinib despite inhibition of BCR-ABL activity. *J Clin Invest* 2011 Jan; **121**(1): 396-409.
10. Kinstrie R, Karamitros D, Goardon N, Morrison H, Hamblin M, Robinson L, *et al.* Heterogeneous leukemia stem cells in myeloid blast phase chronic myeloid leukemia. *Blood Adv* 2016 Dec 27; **1**(3): 160-169.
11. Mahon FX, Rea D, Guilhot J, Guilhot F, Huguet F, Nicolini F, *et al.* Discontinuation of imatinib in patients with chronic myeloid leukaemia who have maintained complete molecular remission for at least 2 years: the prospective, multicentre Stop Imatinib (STIM) trial. *Lancet Oncol* 2010 Nov; **11**(11): 1029-1035.
12. Saussele S, Richter J, Guilhot J, Gruber FX, Hjorth-Hansen H, Almeida A, *et al.* Discontinuation of tyrosine kinase inhibitor therapy in chronic myeloid leukaemia (EURO-SKI): a prespecified interim analysis of a prospective, multicentre, non-randomised, trial. *Lancet Oncol* 2018 Jun; **19**(6): 747-757.
13. Clark RE, Polydoros F, Apperley JF, Milojkovic D, Rothwell K, Pocock C, *et al.* De-escalation of tyrosine kinase inhibitor therapy before complete treatment discontinuation in patients with chronic myeloid leukaemia (DESTINY): a non-randomised, phase 2 trial. *Lancet Haematol* 2019 Jul; **6**(7): e375-e383.
14. Dikic I, Elazar Z. Mechanism and medical implications of mammalian autophagy. *Nat Rev Mol Cell Biol* 2018 Jun; **19**(6): 349-364.
15. Bellodi C, Lidonnici MR, Hamilton A, Helgason GV, Soliera AR, Ronchetti M, *et al.* Targeting autophagy potentiates tyrosine kinase inhibitor-induced cell death in Philadelphia chromosome-positive cells, including primary CML stem cells. *J Clin Invest* 2009 May; **119**(5): 1109-1123.
16. Amaravadi R, Kimmelman AC, White E. Recent insights into the function of autophagy in cancer. *Genes Dev* 2016 Sep 1; **30**(17): 1913-1930.
17. Chude CI, Amaravadi RK. Targeting Autophagy in Cancer: Update on Clinical Trials and Novel Inhibitors. *Int J Mol Sci* 2017 Jun 16; **18**(6).
18. Marin D, Milojkovic D, Olavarria E, Khorashad JS, de Lavallade H, Reid AG, *et al.* European LeukemiaNet criteria for failure or suboptimal response reliably identify patients with CML in early chronic phase treated with imatinib whose eventual outcome is poor. *Blood* 2008 Dec 1; **112**(12): 4437-4444.

19. Newcombe RG. Interval estimation for the difference between independent proportions: comparison of eleven methods. *Stat Med* 1998 Apr 30; **17**(8): 873-890.
20. Lee L. NADA: Nondetects and Data Analysis for Environmental Data. 2017 [cited 2017; Available from: <https://CRAN.R-project.org/package=NADA>
21. R Foundation for Statistical Computing V, Austria. R: A language and environment for statistical computing. . 2017 [cited; Available from: <https://www.R-project.org/>
22. Benjamini Y, Hochberg M. Controlling the false discovery rate: a practical and powerful approach to multiple testing. *J R Stat Soc B* 1995; **57**: 289-300.
23. Baquero P, Dawson A, Mukhopadhyay A, Kuntz EM, Mitchell R, Olivares O, *et al.* Targeting quiescent leukemic stem cells using second generation autophagy inhibitors. *Leukemia* 2018 Sep 5.
24. Kantarjian H, Cortes J. Considerations in the management of patients with Philadelphia chromosome-positive chronic myeloid leukemia receiving tyrosine kinase inhibitor therapy. *J Clin Oncol* 2011 Apr 20; **29**(12): 1512-1516.
25. Cortes JE, Kim DW, Pinilla-Ibarz J, le Coutre P, Paquette R, Chuah C, *et al.* A phase 2 trial of ponatinib in Philadelphia chromosome-positive leukemias. *N Engl J Med* 2013 Nov 7; **369**(19): 1783-1796.
26. Hehlmann R, Lauseker M, Jung-Munkwitz S, Leitner A, Muller MC, Pletsch N, *et al.* Tolerability-adapted imatinib 800 mg/d versus 400 mg/d versus 400 mg/d plus interferon-alpha in newly diagnosed chronic myeloid leukemia. *J Clin Oncol* 2011 Apr 20; **29**(12): 1634-1642.
27. Hughes TP, Lipton JH, Spector N, Cervantes F, Pasquini R, Clementino NC, *et al.* Deep molecular responses achieved in patients with CML-CP who are switched to nilotinib after long-term imatinib. *Blood* 2014 Jul 31; **124**(5): 729-736.
28. Chomel JC, Bonnet ML, Sorel N, Sloma I, Bennaceur-Griscelli A, Rea D, *et al.* Leukemic stem cell persistence in chronic myeloid leukemia patients in deep molecular response induced by tyrosine kinase inhibitors and the impact of therapy discontinuation. *Oncotarget* 2016 Jun 7; **7**(23): 35293-35301.
29. Holyoake TL, Vetrie D. The chronic myeloid leukemia stem cell: stemming the tide of persistence. *Blood* 2017 Mar 23; **129**(12): 1595-1606.

- 543 30. Sheng Z, Ma L, Sun JE, Zhu LJ, Green MR. BCR-ABL suppresses autophagy through ATF5-
544 mediated regulation of mTOR transcription. *Blood* 2011 Sep 8; **118**(10): 2840-2848.
- 545
- 546 31. Colecchia D, Rossi M, Sasdelli F, Sanzone S, Strambi A, Chiariello M. MAPK15 mediates BCR-
547 ABL1-induced autophagy and regulates oncogene-dependent cell proliferation and tumor
548 formation. *Autophagy* 2015; **11**(10): 1790-1802.
- 549
- 550 32. Altman BJ, Jacobs SR, Mason EF, Michalek RD, MacIntyre AN, Coloff JL, *et al.* Autophagy is
551 essential to suppress cell stress and to allow BCR-Abl-mediated leukemogenesis. *Oncogene* 2011
552 Apr 21; **30**(16): 1855-1867.
- 553
- 554 33. Galluzzi L, Pietrocola F, Bravo-San Pedro JM, Amaravadi RK, Baehrecke EH, Cecconi F, *et al.*
555 Autophagy in malignant transformation and cancer progression. *EMBO J* 2015 Apr 1; **34**(7): 856-
556 880.
- 557
- 558 34. Press RD, Galderisi C, Yang R, Rempfer C, Willis SG, Mauro MJ, *et al.* A half-log increase in BCR-
559 ABL RNA predicts a higher risk of relapse in patients with chronic myeloid leukemia with an
560 imatinib-induced complete cytogenetic response. *Clin Cancer Res* 2007 Oct 15; **13**(20): 6136-
561 6143.
- 562
- 563 35. Gallipoli P, Stobo J, Heaney N, Nicolini FE, Clark R, Wilson G, *et al.* Safety and efficacy of pulsed
564 imatinib with or without G-CSF versus continuous imatinib in chronic phase chronic myeloid
565 leukaemia patients at 5 years follow-up. *Br J Haematol* 2013 Dec; **163**(5): 674-676.
- 566
- 567 36. Clark RE, Polydoros F, Apperley JF, Milojkovic D, Pocock C, Smith G, *et al.* De-escalation of
568 tyrosine kinase inhibitor dose in patients with chronic myeloid leukaemia with stable major
569 molecular response (DESTINY): an interim analysis of a non-randomised, phase 2 trial. *Lancet*
570 *Haematol* 2017 Jul; **4**(7): e310-e316.
- 571
- 572 37. Etienne G, Guilhot J, Rea D, Rigal-Huguet F, Nicolini F, Charbonnier A, *et al.* Long-Term Follow-Up
573 of the French Stop Imatinib (STIM1) Study in Patients With Chronic Myeloid Leukemia. *J Clin*
574 *Oncol* 2017 Jan 20; **35**(3): 298-305.
- 575
- 576 38. Haas NB, Appleman LJ, Stein M, Redlinger M, Wilks M, Xu X, *et al.* Autophagy Inhibition to
577 Augment mTOR Inhibition: a Phase I/II Trial of Everolimus and Hydroxychloroquine in Patients
578 with Previously Treated Renal Cell Carcinoma. *Clin Cancer Res* 2019 Jan 11.
- 579
- 580 39. Rangwala R, Leone R, Chang YC, Fecher LA, Schuchter LM, Kramer A, *et al.* Phase I trial of
581 hydroxychloroquine with dose-intense temozolomide in patients with advanced solid tumors
582 and melanoma. *Autophagy* 2014 Aug; **10**(8): 1369-1379.
- 583

40. Rangwala R, Chang YC, Hu J, Algazy KM, Evans TL, Fecher LA, *et al.* Combined MTOR and autophagy inhibition: phase I trial of hydroxychloroquine and temsirolimus in patients with advanced solid tumors and melanoma. *Autophagy* 2014 Aug; **10**(8): 1391-1402.
41. Vogl DT, Stadtmayer EA, Tan KS, Heitjan DF, Davis LE, Pontiggia L, *et al.* Combined autophagy and proteasome inhibition: a phase 1 trial of hydroxychloroquine and bortezomib in patients with relapsed/refractory myeloma. *Autophagy* 2014 Aug; **10**(8): 1380-1390.
42. Chi KH, Ko HL, Yang KL, Lee CY, Chi MS, Kao SJ. Addition of rapamycin and hydroxychloroquine to metronomic chemotherapy as a second line treatment results in high salvage rates for refractory metastatic solid tumors: a pilot safety and effectiveness analysis in a small patient cohort. *Oncotarget* 2015 Jun 30; **6**(18): 16735-16745.
43. Schapink L, van den Ende CHM, Gevers L, van Ede AE, den Broeder AA. The effects of methotrexate and hydroxychloroquine combination therapy vs methotrexate monotherapy in early rheumatoid arthritis patients. *Rheumatology (Oxford)* 2019 Jan 1; **58**(1): 131-134.
44. O'Brien SG, Guilhot F, Larson RA, Gathmann I, Baccarani M, Cervantes F, *et al.* Imatinib compared with interferon and low-dose cytarabine for newly diagnosed chronic-phase chronic myeloid leukemia. *N Engl J Med* 2003 Mar 13; **348**(11): 994-1004.
45. Glivec 400mg film-coated tablets.
46. Gewirtz DA. The Challenge of Developing Autophagy Inhibition as a Therapeutic Strategy. *Cancer Res* 2016 Oct 1; **76**(19): 5610-5614.
47. Wolpin BM, Robinson DA, Wang X, Chan JA, Cleary JM, Enzinger PC, *et al.* Phase II and pharmacodynamic study of autophagy inhibition using hydroxychloroquine in patients with metastatic pancreatic adenocarcinoma. *Oncologist* 2014 Jun; **19**(6): 637-638.
48. Boone BA, Zeh HJ, 3rd, Bahary N. Autophagy Inhibition in Pancreatic Adenocarcinoma. *Clin Colorectal Cancer* 2018 Mar; **17**(1): 25-31.
49. White E. Deconvoluting the context-dependent role for autophagy in cancer. *Nat Rev Cancer* 2012 Apr 26; **12**(6): 401-410.
50. Mitchell R, Hopcroft LEM, Baquero P, Allan EK, Hewit K, James D, *et al.* Targeting BCR-ABL-Independent TKI Resistance in Chronic Myeloid Leukemia by mTOR and Autophagy Inhibition. *J Natl Cancer Inst* 2018 May 1; **110**(5): 467-478.

51. McAfee Q, Zhang Z, Samanta A, Levi SM, Ma XH, Piao S, *et al.* Autophagy inhibitor Lys05 has single-agent antitumor activity and reproduces the phenotype of a genetic autophagy deficiency. *Proc Natl Acad Sci U S A* 2012 May 22; **109**(21): 8253-8258.

Figure Legends

Figure 1. Trial CONSORT diagram. IM = Imatinib; IM/HCQ = Imatinib and Hydroxychloroquine; Rx = treatment

Figure 2. Plot of median *BCR-ABL1:ABL1* ratio (with upper and lower quartiles denoted by vertical bars) over the study period, split by treatment arm. Separate trend lines are shown for each treatment arm, for patients with baseline BCR-ABL greater than (“high” group) and less than or equal to (“low” group) the overall median value. Individual patient data (jittered) are overlaid. Values that are recorded as undetectable (zero) have been censored at 0.001% – the censored ranges are denoted by dotted lines

Figure 3. (A) Butterfly plot illustrating prevalence of selected haematology and biochemistry toxicities and adverse events during the first 12 months of treatment. Percentage of patients on each arm with toxicities and adverse events present at any grade and grade ≥ 2 are presented, restricted to toxicities and adverse events where at least 10% of patients on either arm experience worse grade ≥ 1 during the first 12 months of treatment. **(B) Butterfly plot illustrating prevalence of selected haematology and biochemistry toxicities and adverse events during the 12 months follow-up period.** Percentage of patients on each arm with toxicities and adverse events present at any grade and grade ≥ 2 are presented, restricted to toxicities and adverse events where at least 10% of patients on either arm experience worse grade ≥ 1 during the 12 months follow-up period. The 2-sided p-value from a Mann-

Whitney test comparing the distribution of grades between treatment arms is presented for each CTCAE-defined toxicity. Significant differences between arms at the 2-sided 5% level are depicted (*).

Table I. Exclusion criteria

Table 2. Baseline demographics and disease characteristics. Data are presented as median or n (%). IM = Imatinib; HCQ = Hydroxychloroquine; ECOG = Eastern Cooperative Oncology Group.

Table 3. Molecular response rates at 12 and 24 months in IM versus IM/HCQ arms. ‘Success’ rates were determined by ≥ 0.5 log reduction in *BCR-ABL1:ABL1* ratio between arms. Patients who withdrew before assessment or who had an increase in dose prior to assessment were classified as ‘failures’. Complete molecular response (CMR) was defined as undetectable *BCR-ABL1* in the presence of at least 10,000 *ABL1* control transcripts. Major molecular response (MMR) was defined a *BCR-ABL1:ABL1* ratio consistently $\leq 0.1\%$. IM = Imatinib; IM/HCQ = Imatinib and hydroxychloroquine.

Supplemental figure legends (online only)

Figure S1. Ratio of CGP metabolite to IM, and HCQ plasma levels. (A) Ratio of current to baseline CGP to IM levels over sequential cycle follow-up. No correlation was detected between ratio and treatment cohort. (B) HCQ concentration (ng/ml) did not correlate with 12 month ‘success’ or ‘failure’ rates. IM = Imatinib; HCQ = Hydroxychloroquine.

Figure S2. In vitro autophagy and functional response on HSPC population. (A) Percentage of LC3B-II puncta positive cells by IF in CD34+ BM cells versus unselected PB ($p=0.002$). (B) Western blotting of LC3B-II and GAPDH in 3 patient samples (pt 42.6 – BM; pt 47 – BM; pt 60 – PB and BM) untreated and treated *in vitro* with HCQ. (C) Change from baseline in percentage of colonies by CFC analysis from CD34+-selected BM populations at 6 and 12 months in IM and IM/HCQ cohort. (D) Change from baseline in the percentage of colonies by LTC-IC analysis from CD34+-selected BM populations at 6 and 12

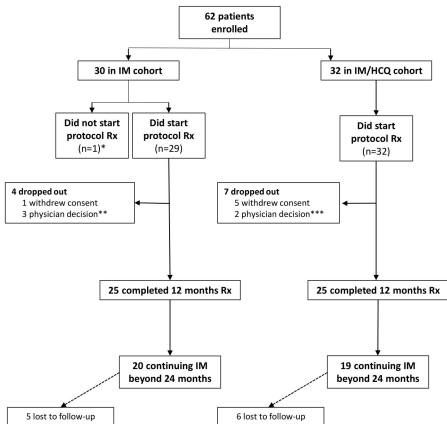
674 months in IM and IM/HCQ cohort. HSPC = haemopoietic stem and progenitor cell; IM = Imatinib; HCQ =
675 Hydroxychloroquine.

676 **Table S1. Proportion of DMR split by 'high' and 'low' baseline *BCR-ABL1:ABL1* ratio according to**
677 **median ratio at trial entry**

678 **Table S2. Sample number used in *in vitro* experiments**

679

Figure 1. CONSORT diagram

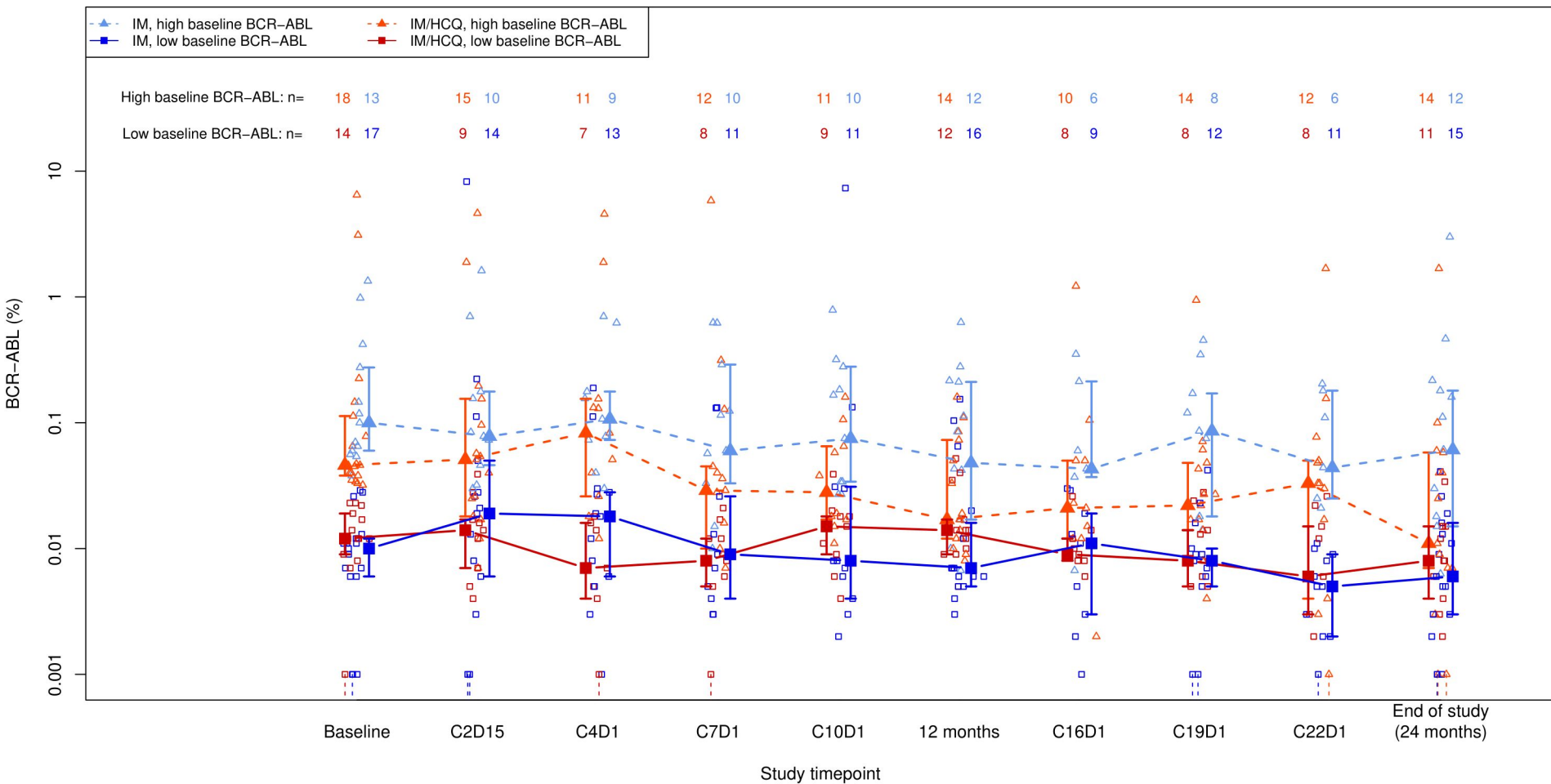


*withdrew consent prior to initiation of study; received no treatment on study

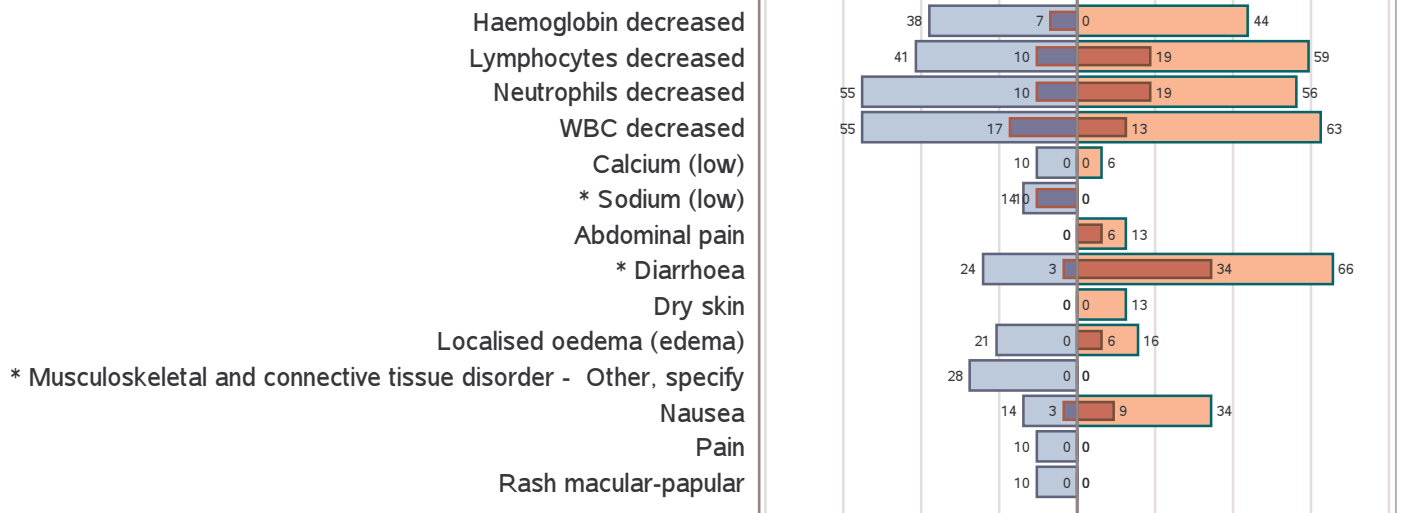
** 1 due to rising BCR-ABL PCR, 1 due to low IM plasma levels leading to increased dose, and 1 change to second generation TKI

*** 1 due to rising BCR-ABL PCR, and 1 due to another co-morbidity (depression)

Figure S3.



A. Treatment period



B. Follow-up period

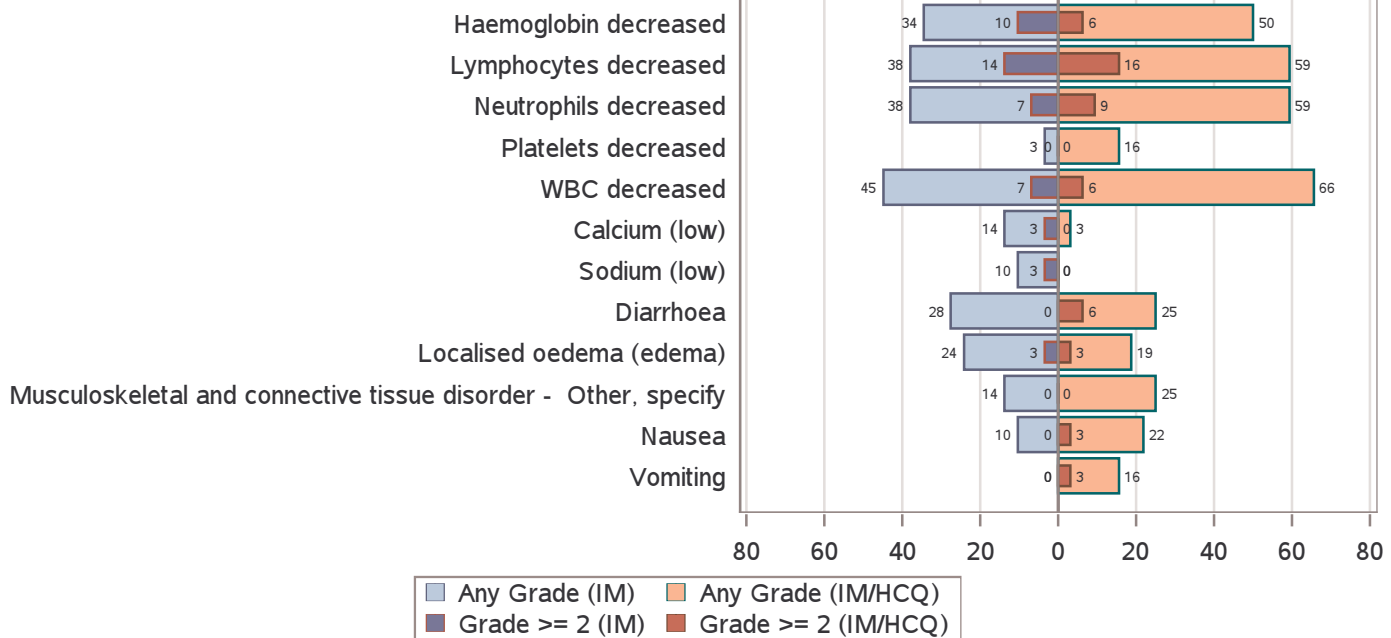


Table 1. Exclusion criteria

Exclusion criteria
Patient who have been treated with Imatinib <12 months or patients who have changed dose in previous 6 months
<p>Impaired cardiac function including any one of the following:</p> <ul style="list-style-type: none"> • Screening ECG with a QTc >450 msec • Patients with congenital long QT syndrome • History or presence of sustained ventricular tachycardia • Any history of ventricular fibrillation or torsades de pointes • Congestive heart failure (NY Heart Association class III or IV) • Uncontrolled hypertension
Patients with severe GI disorder, uncontrolled epilepsy, known G6PD deficiency, known porphyria, moderate or severe psoriasis, known myasthenia gravis or other concurrent severe and/or uncontrolled medical conditions
Patients who have received chemotherapy, any investigational drug or undergone major surgery <4 weeks prior to starting study drug or who have not recovered from side effects of such therapy
Concomitant use of any other anti-cancer therapy or radiation therapy
Patients who have a pre-existing maculopathy of the eye
<p>Female patients who are pregnant or breast feeding or patients of reproductive potential not willing to use a double method of contraception including a barrier method (i.e. condom) during the study and 3 months after the end of treatment. (Patients should continue with standard contraceptive precautions beyond the study period as per Imatinib)</p>
Women of childbearing potential (WOCBP) must have a negative serum pregnancy test within 7 days of the first administration of oral HCQ
Male patients whose sexual partners are WOCBP not willing to use a double method of contraception including condom during the study and 3 months after the end of treatment on study. (Patients should continue with standard contraceptive precautions beyond the study period as per Imatinib)
Patients with any significant history of non-compliance to medical regimens or with inability to grant a reliable informed consent

Table 2. Baseline Demographics and Disease Characteristics

Baseline characteristic	IM (n = 30)	IM/HCQ (n = 32)
Median age, years (IQR)	49.5 (42.0 – 66.0)	50.0 (38.5 – 60.5)
Gender		
Female	33.3%	28.1%
Male	66.7%	71.9%
Ethnicity		
White	93.1%	100.0%
Afro /Caribbean	6.9%	0.0%
ECOG		
0	93.1%	87.5%
1	6.9%	12.5%
IM dose at trial entry		
400mg	90.0%	84.4%
600mg	6.7%	12.5%
800mg	3.3%	3.1%
Median time on IM pre-trial Entry, months (IQR)	52.2 (32.8 – 110.0)	49.7 (27.5 – 89.0)
Response to imatinib at trial entry		
Complete haematological response	10.0%	0.0%
Partial cytogenetic response	3.3%	0.0%
Major cytogenetic response	3.3%	6.3%
Complete cytogenetic response	30.0%	25.0%
Major molecular response	50.0%	62.5%
Deep molecular response	0.0%	0.0%
Unknown	3.3%	6.3%
Additional chromosomal abnormalities	6.7%*	9.4%**

NOTE. Data presented as percentage, or median (with IQR).

IM is Imatinib; HCQ is hydroxychloroquine; IQR is inter-quartile range (the 25th and 75th percentiles). * one patient on imatinib only had a variant Philadelphia chromosome translocation, and one had a deletion of chromosome 12. **one patient on IM/HCQ had trisomy 21, one had a double Philadelphia chromosome abnormality and one had a deletion of chromosome 9.

Table 3. Molecular response rates at 12 and 24 months in the IM versus IM/HCQ arms.

		Study arm			
		IM		IM/HCQ	
		No. of patients	%	No. of patients	%
12 month 'success'/'failure' status (1-sided p=0.58; 2-sided p=0.99)	Success	6	20.0%	6	18.8%
	Failure	24	80.0%	26	81.3%
Reason for treatment 'failure' at 12 months	Failed to achieve >0.5 log reduction	19	79.2%	19	73.1%
	Increase in IM dose	1	4.2%	0	0.0%
	Withdrew	4	16.7%	7	26.9%
24 month 'success'/'failure' status (1-sided p=0.059; 2-sided p=0.090)	Success	5	16.7%	12	37.5%
	Failure	25	83.3%	20	62.5%
Reason for treatment 'failure' at 24 months	Failed to achieve >0.5 log reduction	19	76.0%	13	65.0%
	No data	1	4.0%	0	0.0%
	Increase in IM dose	1	4.0%	0	0.0%
	Withdrew	4	16.0%	7	35.0%
Molecular response at 12 months (1-sided p=0.43; 2-sided p=0.78)	CMR	0	0.0%	0	0%
	MMR	20	66.7%	23	71.9%
	No molecular response	5	16.7%	2	6.3%
	Missing data	5	16.7%	7	21.9%
Molecular response at 24 months (1-sided p=0.33; 2-sided p=0.58)	CMR	1	3.3%	2	6.3%
	MMR	19	63.3%	22	68.8%
	No molecular response	4	13.3%	1	3.1%
	Missing data	6	20.0%	7	21.9%