

Additional chromosomal abnormalities at chronic myeloid leukemia diagnosis predict an increased risk of progression

Richard E. Clark,¹ Jane F. Apperley,² Mhairi Copland,³ and Silvia Cicconi⁴

¹Department of Molecular and Clinical Cancer Medicine, University of Liverpool, Liverpool, United Kingdom; ²Centre for Haematology, Imperial College, London, United Kingdom; ³Paul O’Gorman Leukaemia Research Centre, Institute of Cancer Sciences, University of Glasgow, Glasgow, United Kingdom; and ⁴Liverpool Clinical Trials Centre, University of Liverpool, Liverpool, United Kingdom

Key Points

- At CML diagnosis, additional chromosomal lesions beyond the Ph translocation confer a higher risk of later disease progression.
- The adverse effect of these lesions is independent of the widely used Sokal and ELTS risk scores.

At diagnosis of chronic-phase chronic myeloid leukemia (CML), there are conflicting data as to whether additional cytogenetic abnormalities (ACAs) beyond a standard Philadelphia (Ph) translocation confer a higher risk of subsequent disease progression. In the United Kingdom SPIRIT2 trial comparing imatinib 400 mg daily with dasatinib 100 mg daily, diagnostic karyotypes were available in 763 of the 814 patients recruited. Of these, 27 had ACAs in either/both the original 4 major route group (trisomy 8 or 19, iso17q or a second Ph) or the 5 additional lesions recently described (trisomy 21, 3q26.2, monosomy 7/7q-, 11q23, and complex karyotypes), and their progression rate was significantly higher (22.2%) than in patients without one of these ACAs (2.2%; $P < .001$). Patients with ACAs had worse progression-free survival (PFS; hazard ratio [HR], 5.21; 95% confidence interval [CI], 2.59–10.50; $P < .001$) and freedom from progression (FFP; HR, 12.66; 95% CI, 4.95–32.37; $P < .001$) compared with patients without ACAs. No association was seen between the Sokal or European Treatment and Outcome Study long-term survival (ELTS) scores and the presence of ACAs. Univariate analysis showed that higher Sokal and ELTS scores and the presence of ACAs were associated with poorer PFS, though only ACAs and high-risk ELTS scores were associated with poorer FFP. Multivariable models identified both the Sokal/ELTS score and ACAs as significant independent factors for PFS but only ELTS score and ACAs as significant independent factors for FFP. The data support the view that certain ACAs are predictive of disease progression independently of Sokal or ELTS scores.

Introduction

In chronic myeloid leukemia (CML), disease progression to blast crisis may be accompanied by additional cytogenetic abnormalities (ACAs) beyond the standard t(9;22) Philadelphia (Ph) translocation. The most common new lesions include trisomy 8, an additional Ph translocation, isochromosome 17q, and trisomy 19.^{1–3} However, the prognostic significance at chronic phase diagnosis of these 4 “major route” lesions for disease progression is less clear. Although emerging clones may be transient and not associated with disease progression,⁴ early reports correlate the appearance of ACAs with clinical deterioration,⁵ and patients with ACAs present at diagnosis had a shorter survival.⁶

Since the advent of tyrosine kinase inhibitor (TKI) therapy, progression is much less common, and the significance of ACAs is less clear. ACAs emerging during imatinib treatment may be an independent

Submitted 9 October 2020; accepted 28 December 2020; published online 22 February 2021. DOI 10.1182/bloodadvances.2020003570.

Subject to the approval of Newcastle University, the authors will in principle be pleased to share the dataset with bona fide researchers in the field by contacting the corresponding author, Richard E. Clark (clarkre@liverpool.ac.uk).

The full-text version of this article contains a data supplement.
© 2021 by The American Society of Hematology

adverse survival factor,⁷ and patients on imatinib following interferon failure who developed ACAs are at increased risk of hematological relapse.⁸ The significance of certain ACAs emerging during treatment was confirmed in a 2326-patient study,⁹ which identified several adverse ACAs beyond the original 4 major route lesions. However, the significance of ACAs already present at initial diagnosis is not as well characterized. In the German/Swiss CML 4 study, the 4 major route ACAs at diagnosis correlate with poor survival and a sixfold increased risk of disease progression.^{10,11} However, this adverse effect was not confirmed in a study of TKIs in chronic phase,¹² and clonal evolution did not alter overall and event-free survival (EFS) in second-generation TKI recipients.¹³ The CML 4 study identified 5 additional lesions (trisomy 21, 3q26.2, monosomy 7/7q-, 11q23, and complex karyotypes) beyond the 4 major route lesions, which also confer an increased risk of death from CML.¹⁴ Current European LeukemiaNet recommendations suggest that any of these 9 lesions should be regarded as increasing the risk of disease progression,¹⁵ and the National Comprehensive Cancer Network guidelines also recommend close follow-up of patients with ACAs.¹⁶ However, only ~3% of patients have ACAs at diagnosis, and further studies are needed to confirm the predictive value of ACAs and their independence from other progression risk factors.

Several scores derived from simple demographic and diagnostic data can predict survival,¹⁷⁻¹⁹ including the European Treatment and Outcome Study long-term survival (ELTS) score, derived from a large TKI-treated population and examining parameters associated with death from CML, and validated in several large independent cohorts.²⁰⁻²²

Here, we present details of diagnostic ACAs and their significance in the recent SPIRIT2 study, focusing on the 9 lesions described above, and correlate these with the Sokal and ELTS scores.

Patients and methods

The SPIRIT2 clinical trial recruited 814 newly diagnosed patients with chronic-phase CML between 2008 and 2013 across 146 United Kingdom (UK) sites (www.clinicaltrials.gov; study identifier #NCT01460693). It was approved by the National Research Ethics Committee (London Central Office) and the UK Medicines and Healthcare Products Regulatory Agency. Informed consent was obtained from patients prior to their inclusion. The study was sponsored by Newcastle Hospitals National Health Service (NHS) Trust.

Patients were randomized 1:1 to either dasatinib 100 mg or imatinib 400 mg, each once daily, and followed up monthly for 3 months, every 3 months until 12 months, and then every 6 months until 5 years or therapy change due to either intolerance or resistance, as described elsewhere.²³ On each occasion, the *BCR-ABL1:ABL1* ratio was assessed centrally (Imperial College Healthcare NHS Trust). The primary end point was 5-year EFS.

On entry, marrow cytogenetics with G-banding were carried out. Since recording the components of the various prognostic scoring systems was not mandatory at trial entry, 308 of the 763 patients with available diagnostic cytogenetics could not be allocated Sokal or ELTS scores.

Definitions of outcome end points

Progression-free survival (PFS) was defined as the time from trial entry to disease progression to either accelerated phase or blast crisis or death from any cause, whichever was earlier. Freedom from progression (FFP) was defined as the time from entry to progression alone. Times from entry to molecular response (MR) end points MR2 (<1% *BCR-ABL1*), MR3 (<0.1% *BCR-ABL1*), MR4 (<0.01% *BCR-ABL1*), and MR4.5 (<0.0032% *BCR-ABL1*) were also examined.

Statistical analysis

Survival analysis was performed for PFS, FFP, and time to molecular end points. Survival distributions were estimated using the Kaplan-Meier method and compared between the subgroups of interest with the log-rank test. Cox proportional hazard regression was used to explore the prognostic factors in both univariable and multivariable settings, where backward selection based on the Akaike information criterion was used for selecting the best model.²⁴ The Cox models results are presented as hazard ratios (HRs) with 95% confidence intervals (CIs) alongside the coefficient estimate with its standard error. The proportional hazard assumption was assessed via the Schoenfeld residuals.²⁵ Patients with ACAs and progression were summarized as frequencies of counts and percentages and compared using Fisher's exact test. Associations between Sokal or ELTS scores and ACAs were explored with Fisher's exact or Wilcoxon-Mann-Whitney tests. A 5% significance level was used to determine statistical significance. All analyses were performed using R version 3.5.1 and STATA v.15 (StatCorp, College Station, TX).

Results

SPIRIT2 recruited 814 patients, but 2 never received their allocated drug (1 incorrect diagnosis, 1 consent withdrawal) and are excluded. Table 1 presents diagnostic cytogenetic data for 812 patients, with rates of disease progression. Overall, 23 patients progressed (12 received dasatinib and 11 imatinib). Diagnostic cytogenetics were unavailable in 49 patients (1 with progression and 48 without progression). Of 763 patients with cytogenetic data, 640 had a single t(9;22) Ph translocation only, and 15 (2.3%) of these patients progressed. Fifty-five patients (one of whom progressed) had a 3-way variant Ph translocation, and 5 patients had a 4-way variant Ph (one of whom also had a 3-way Ph variant). Seventeen of 467 male patients with available diagnostic cytogenetics had Y chromosome loss; none of these patients progressed. Although trial entry required Ph positivity, 6 cytogenetically normal (but *BCR-ABL1*-positive) patients were inadvertently recruited; none of these patients progressed.

Table 1 provides details of the observed ACAs. Seventeen patients had ≥ 1 of the 4 major route lesions described above (2 patients had 2 such lesions each, detailed in the legend to Table 1), and of these, 3 patients (17.6%) progressed. Similarly, 14 patients had ≥ 1 of the 5 additional lesions described by Hehlmann et al,¹⁴ of whom 5 (35.7%) progressed. These are hereafter labeled the "original major route" and the "additional lesions" groups.

Effect of ACAs on progression and time to MR

Of the 736 patients without any of the 9 original major route or additional lesion ACAs, 16 (2.2%) progressed. Table 2 shows that progression is higher with original major route lesions (17.6%; $P = .011$), with additional lesions (35.7%; $P < .001$), and

Table 1. Diagnostic karyotypic data for 812 assessable patients according to whether they progressed

Lesion	No progression	Progression	Percentage progressing
Normal (no Ph)	6	0	
Ph only	625	15	2.3
3-way Ph*	54	1	1.9
4-way Ph*	5	0	
Loss of Y	17	0	
Original major route lesion	14	3	17.6
Trisomy 8	5†	2‡	
Additional Ph	3	1‡	
Isochromosome 17q	6	1	
Trisomy 19	1†	0	
Additional lesions	9	5	35.7
Trisomy 21	0	0	
3q26.2 lesion	0	1	
Monosomy 7/7q--	2§	0	
11q23 lesion	2	1	
Complex karyotype	7§	3§	
Other lesion	20	0	
Total unique patientst	741	22	2.9
Karyotype unavailable	48	1	2.0

Two patients of the original 814 who never received trial drug are excluded.
 *One patient had both a 3-way and a 4-way Ph translocation.
 †One nonprogressing patient had both trisomy 8 and trisomy 19.
 ‡One progressing patient had both trisomy 8 and a second Ph translocation.
 §Of patients with complex karyotypes, 2 nonprogressing patients also had monosomy 7 (one of whom also had isochromosome 17q); furthermore, 1 patient without progression had trisomy 8 and 19, and 2 progressing patients also had trisomy 8 (one of whom had a second Ph translocation as well).

in the 27 patients with ≥ 1 of the 9 lesions (22.2%; $P < .001$). In the 6 patients with ≥ 1 of these 9 ACAs who progressed, 3 had received imatinib and 3 dasatinib.

Figure 1 shows the 5-year PFS for patients with an original major route lesion is 67% (95% CI, 38-85), which is significantly worse than the 91% (95% CI, 89-93; $P < .001$) in patients without such lesions (Figure 1A). Figure 1B-C gives similar results for additional lesions (60% [32-80] vs 91% [89-93]) and these groups combined (68% [46-83] vs 92% [89-93]). Median survival was not reached in any ACA group. However, the 71 PFS events are dominated by the 49 deaths without progression, from causes unrelated to CML. Figure 2 therefore shows the FFP, in which the only event is progression, stratified as for Figure 1. Each panel again shows that ACAs confer significantly worse FFP (80% [51-93] vs 97% [96-98] for original major route lesions [Figure 2A], 66% [36-84] vs 97% [96-99] for additional lesions [Figure 2B], and 76% [54-88] vs 98% [96-99] for these groups combined [Figure 2C]). Original major route lesions, additional lesions, or these combined had no effect on the time to MR2, MR3, MR4, or MR4.5 (data not shown).

ACAs do not correlate with Sokal or ELTS score

Sokal and ELTS scores were available in 455 of the 763 patients with diagnostic cytogenetics. Of these, 167 patients had low, 168 had intermediate, and 120 had high Sokal scores. Supplemental

Table 2. Progression rates according to presence or absence of ACAs at diagnostic cytogenetics

Group	No progression	Progression	Percentage progressing	P
Original major route lesion				
Yes	14	3	17.6	.011
No	727	19	2.5	
Additional lesions				
Yes	9	5	35.7	<.001
No	732	17	2.3	
Combined group				
Yes	21	6	22.2	<.001
No	720	16	2.2	

Original major route and additional lesions groups are as defined in Table 1 and the text. The combined group comprises patients with ≥ 1 of any of the 9 lesions in either the original major route or the additional lesions group. P values were evaluated by Fisher's exact test.

Figure 1A shows a significant difference in the PFS among these 3 groups, though no difference was seen in FFP (data not shown). However, no association was seen between the presence/absence at diagnosis of original major route lesions, additional lesions, or these combined and the Sokal score when expressed either as categorical variables (low/intermediate/high; Fisher's exact test) or as a continuous variable (Wilcoxon-Mann-Whitney test). Similarly, 252 patients had low, 137 had intermediate, and 66 had high ELTS scores, and there is a significant difference in both the PFS (supplemental Figure 1B) and FFP (data not shown) among these risk groups. However, again, no association was seen between the presence/absence of original major route lesions, additional lesions, or these combined and the ELTS score expressed either as categorical or continuous variable (Wilcoxon-Mann-Whitney test).

Both ACAs and Sokal/ELTS scores independently predict PFS

Although no association was seen between Sokal or ELTS scores and either original major route or additional lesion ACAs (or these combined), the ability of each of these to independently predict PFS was tested by univariate Cox regression. Table 3 shows that all 5 variables were predictive of PFS. They were then examined in multivariable models using ACAs summarized as combined lesions to maximize occurrences and thus provide more accurate estimates than separate ACA groups. The results for the models are given in Table 3 (using combined lesions and Sokal score as covariates and combined lesions and ELTS score). In both cases, the model including the lesions and the score was selected as best model, indicating that both the Sokal/ELTS score and combined lesions are independent predictive factors of PFS.

ACAs and the ELTS score, but not the Sokal score, predict FFP

The predictive value of the scores and ACAs on FFP is given in Table 4, which shows that in univariate analysis, the Sokal score was not predictive of FFP, but original major route lesions, additional lesions, and these combined were all related to poorer FFP, and high ELTS scores were associated with inferior FFP when compared with low ELTS scores. In multivariable models, adding the Sokal score did not improve the predictive value of combined

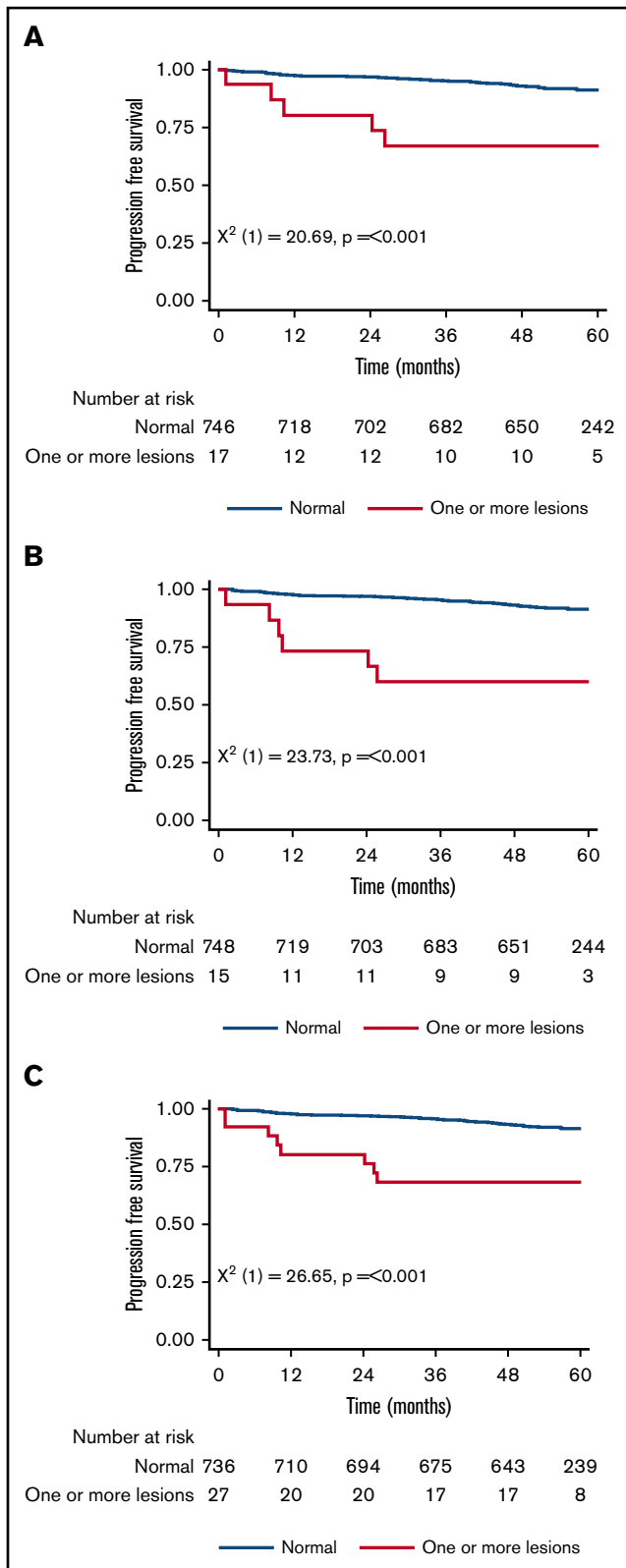


Figure 1. Patient PFS. Stratified by presence/absence of original major route ACAs (A), additional lesions (B), and combined 9 lesions (C).

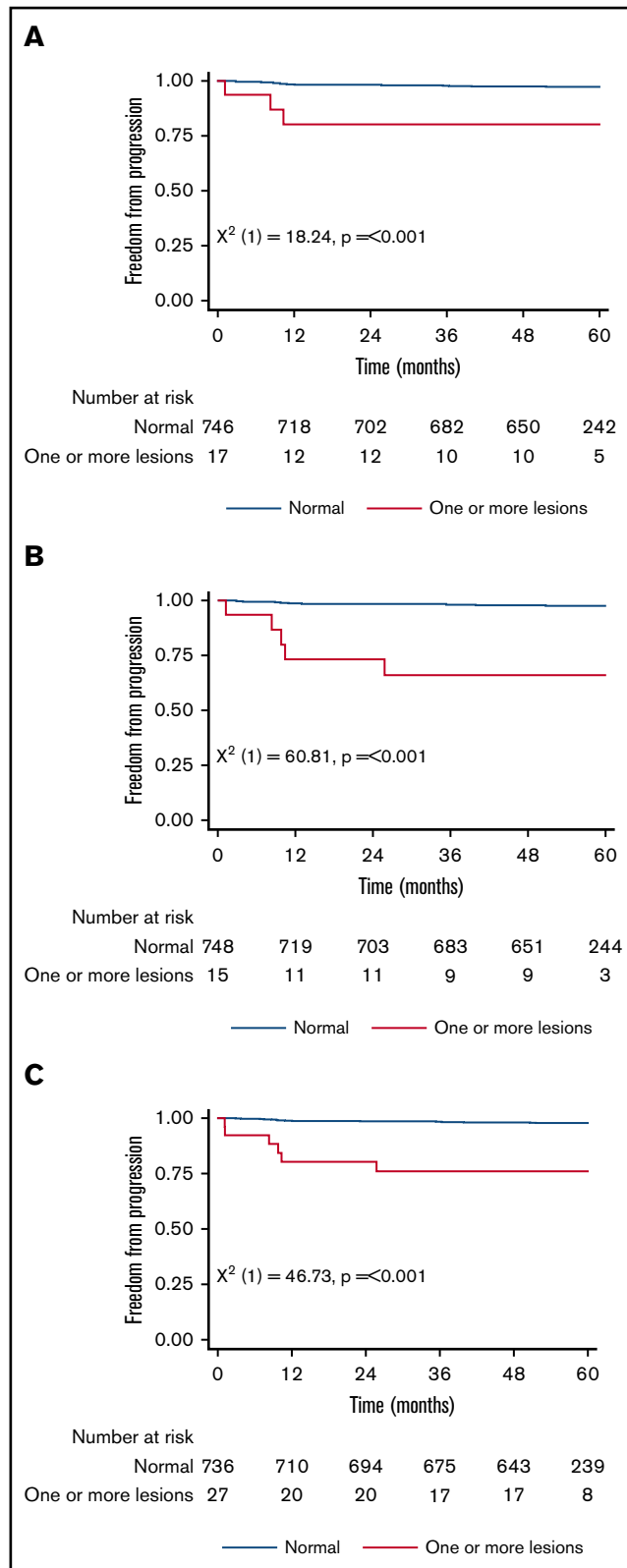


Figure 2. Patient FFP. Stratified by presence/absence of original major route ACAs (A), additional lesions (B), and combined 9 lesions (C).

Table 3. Cox regression examining the effect of scoring systems and ACAs on predicting PFS

Covariate	Score levels	Estimate (SE)	HR (95% CI)	P
Univariate analysis				
Sokal score	Low	Reference	Reference	
	Intermediate	0.91 (0.418)	2.49 (1.091, 5.624)	.03
	High	0.99 (0.438)	2.68 (1.137, 6.325)	.024
ELTS score	Low	Reference	Reference	
	Intermediate	1.15 (0.383)	3.15 (1.488, 6.676)	.003
	High	1.63 (0.403)	5.11 (2.32, 11.276)	<.001
Original major route lesions	No lesions	Reference	Reference	—
	Lesions	1.8 (0.526)	6.03 (2.149, 16.9)	.001
Additional lesions	No lesions	Reference	Reference	—
	Lesions	1.57 (0.526)	4.85 (1.711, 13.449)	.003
Combined group	No lesions	Reference	Reference	—
	Lesions	1.61 (0.441)	5.0 (2.106, 11.872)	<.001
Multivariable Cox regression model (Sokal score)				
Combined lesions	No lesions	Reference	Reference	—
	Lesions	1.55 (0.442)	4.73 (1.989, 11.252)	<.001
Sokal score	Low	Reference	Reference	—
	Intermediate	0.86 (0.419)	2.37 (1.044, 5.395)	.039
	High	0.96 (0.438)	2.62 (1.1, 6.18)	.028
Multivariable Cox regression model (ELTS score)				
Combined lesions	No lesions	Reference	Reference	—
	Lesions	1.48 (0.443)	4.37 (1.836, 10.427)	.001
ELTS score	Low	Reference	Reference	—
	Intermediate	1.09 (0.384)	2.99 (1.408, 6.342)	.004
	High	1.59 (0.404)	4.92 (2.23, 10.868)	<.001

SE, standard error.

lesions, but both the ELTS score and combined lesions were independent predictive factors for FFP.

Discussion

Data from the German/Swiss CML 4 trial suggest that certain ACAs at diagnosis might identify patients at high risk of progression. Additional data on this are needed from large trials. The present data from the recent 814-patient UK SPIRIT2 study may therefore be helpful. The progression rate at the end of follow-up in the 27 patients with ≥ 1 of the 9 lesions identified in CML 4^{10,11,14} is ~ 10 -fold higher, at 22.2%, and PFS is significantly worse than in patients without these lesions. This finding is broadly similar to CML 4 and supports the notion that the 9 ACAs reported in CML 4 represent a group of adverse ACAs. Although 20 further patients (listed as “other” in Table 1) had an additional cytogenetic lesion beyond Ph, these additional lesions were all unique (except for 47 XYY in 2 of the 467 male cases; this is typically constitutional, but this was not investigated here). We cannot therefore determine whether further ACAs might also confer useful information about outcome, despite the size of the present study. Meta-analyses across several studies will be needed to address this question.

Secondly, the presence of ACAs is not correlated with the Sokal or ELTS score, suggesting that ACAs may give additional information

beyond simple demographic and diagnostic hematological data. Multivariable models confirm that for predicting progression, a high ELTS score (though not the Sokal score) may add to the value of ACAs. A composite score combining ACAs with ELTS score might give a more powerful prediction of progression, but we cannot determine this, because despite 812 assessable entrants, there were only 22 progressions with a diagnostic karyotype.

As there are more than twice as many non-CML deaths as progressions (49 vs 22), we have also reanalyzed the FFP data using non-CML death as a competing risk. The statistically significant differences for the cumulative incidence of progression remain unchanged for the original 4 major route lesions, the 5 additional lesions, and the combined 9 ACAs. Similarly, the univariate analyses are unchanged, and furthermore, the multivariable modeling produces the same findings, namely that in the model including “combined” ACAs and Sokal score, only the combined ACA was predictive of progression, but in the model including combined ACAs and ELTS score, both the ACA and the ELTS score were statistically significant predictors.

The emergence of ACA in Ph-negative cells (ie, clonal cytogenetic evolution) may occasionally occur during TKI treatment.²⁶⁻³¹ The most common abnormalities include trisomy 8 and loss of the Y chromosome. In the initial version of the SPIRIT2 protocol, repeat

Table 4. Cox regression examining the effect of scoring systems and ACAs on predicting FFP

Covariate	Score levels	Estimate (SE)	HR (95% CI)	P
Univariate analysis				
Sokal score	Low	Reference	Reference	
	Intermediate	0.28 (0.764)	1.32 (0.296, 5.9)	.716
	High	1.2 (0.69)	3.31 (0.856, 12.806)	.083
ELTS score	Low	Reference	Reference	
	Intermediate	0.86 (0.671)	2.35 (0.632, 8.764)	.202
	High	1.61 (0.671)	5.0 (1.341, 18.604)	.017
Original major route lesions	No lesions	Reference	Reference	—
	Lesions	2.15 (0.764)	8.56 (1.915, 38.304)	.005
Additional lesions	No lesions	Reference	Reference	—
	Lesions	2.45 (0.652)	11.6 (3.233, 41.612)	<.001
Combined group	No lesions	Reference	Reference	—
	Lesions	2.42 (0.592)	11.21 (3.512, 35.754)	<.001
Multivariable Cox regression model (Sokal score)				
Combined lesions	No lesions	Reference	Reference	—
	Lesions	2.32 (0.596)	10.22 (3.18, 32.833)	<.001
Sokal score	Low	Reference	Reference	—
	Intermediate	0.19 (0.765)	1.21 (0.27, 5.412)	.805
	High	1.06 (0.694)	2.89 (0.741, 11.24)	.127
Multivariable Cox regression model (ELTS score)				
Combined lesions	No lesions	Reference	Reference	—
	Lesions	2.23 (0.599)	9.33 (2.886, 30.153)	<.001
ELTS score	Low	Reference	Reference	—
	Intermediate	0.73 (0.674)	2.08 (0.556, 7.804)	.276
	High	1.42 (0.678)	4.14 (1.096, 15.636)	.036

marrow cytogenetics were requested at 12 and 24 months, but these proved unpopular in patients with adequate MRs, similar to other contemporary studies, and were abandoned midtrial in a protocol revision. We cannot therefore comment on the evolution of the ACA identified here or on the acquisition of new ACAs that were absent at initial diagnosis and may be an unfavorable feature.^{9,32} However, in the 47 patients with a chromosomal abnormality beyond Ph at diagnosis (27 with ≥ 1 of the 9 ACAs of interest and 20 with a different lesion), all their lesions were in Ph-positive cells.

Finally, only 23 of the 812 assessable patients progressed (of whom 12 received dasatinib and 11 imatinib; 1 patient had missing cytogenetics), a happy consequence of successful modern TKI therapy. Despite the statistically significant findings, there are only 6 unique patients with ≥ 1 of the 9 ACAs of interest who progressed. In exploratory analysis, if only 5 unique cases progressed, the significance of the findings would not change. Nevertheless, we advise caution in overinterpreting the data. In defining the significance of ACAs, it is unlikely that a single study or national group will be able to avoid this same problem, though a meta-analysis with other large studies would be of considerable interest.

Acknowledgments

The authors gratefully acknowledge Newcastle University (chief investigator: Stephen O'Brien) for access to SPIRIT2 trial data.

J.F.A. is a National Institute for Health Research Senior Investigator and acknowledges the support of the Imperial College National Institute for Health Research-Biomedical Research Centre.

Authorship

Contribution: R.E.C. designed this study, was a member of the SPIRIT2 trial management group, entered patients, carried out analyses, and wrote the manuscript; J.F.A. and M.C. were members of the SPIRIT2 trial management group and entered patients; S.C. carried out the statistical analyses and cowrote the manuscript; and all authors approved the final version of the manuscript.

Conflict-of-interest disclosure: R.E.C. declares research support and honoraria from Novartis and Bristol Myers Squibb (BMS) and honoraria from Pfizer in the past 3 years. J.F.A. declares research support and honoraria from Incyte, Novartis, and Pfizer and honoraria from BMS in the past 3 years. M.C. declares research support from Cyclacel, Novartis, BMS, and Incyte; advisory board membership for BMS, Novartis, Incyte, Pfizer, and Daiichi Sankyo; and honoraria from Astellas, BMS, Novartis, Incyte, Pfizer, Takeda, and Celgene. S.C. declares no competing financial interests.

Correspondence: Richard E. Clark, University of Liverpool, Room 150, 1st Floor Sherrington Building, Ashton St, Liverpool L69 3GE, United Kingdom; e-mail: clarkre@liverpool.ac.uk.

References

1. Hartley SE, McBeath S. Cytogenetic follow-up in chronic myeloid leukemia. *Cancer Genet Cytogenet*. 1981;3(1):37-46.
2. Cervantes F, Ballesta F, Mila M, Rozman C. Cytogenetic studies in blast crisis of Ph-positive chronic granulocytic leukemia: results and prognostic evaluation in 52 patients. *Cancer Genet Cytogenet*. 1986;21(3):239-246.
3. Johansson B, Fioretos T, Mitelman F. Cytogenetic and molecular genetic evolution of chronic myeloid leukemia. *Acta Haematol*. 2002;107(2):76-94.
4. Watmore AE, Potter AM, Sokol RJ, Wood JK. Value of cytogenetic studies in prediction of acute phase CML. *Cancer Genet Cytogenet*. 1985;14(3-4):293-301.
5. Swolin B, Weinfeld A, Westin J, Waldenström J, Magnusson B. Karyotypic evolution in Ph-positive chronic myeloid leukemia in relation to management and disease progression. *Cancer Genet Cytogenet*. 1985;18(1):65-79.
6. Sokal JE, Gomez GA, Baccarani M, et al. Prognostic significance of additional cytogenetic abnormalities at diagnosis of Philadelphia chromosome-positive chronic granulocytic leukemia. *Blood*. 1988;72(1):294-298.
7. Cortes JE, Talpaz M, Giles F, et al. Prognostic significance of cytogenetic clonal evolution in patients with chronic myelogenous leukemia on imatinib mesylate therapy. *Blood*. 2003;101(10):3794-3800.
8. O'Dwyer ME, Mauro MJ, Blasdel C, et al. Clonal evolution and lack of cytogenetic response are adverse prognostic factors for hematologic relapse of chronic phase CML patients treated with imatinib mesylate. *Blood*. 2004;103(2):451-455.
9. Gong Z, Medeiros LJ, Cortes JE, et al. Cytogenetics-based risk prediction of blastic transformation of chronic myeloid leukemia in the era of TKI therapy. *Blood Adv*. 2017;1(26):2541-2552.
10. Fabarius A, Leitner A, Hochhaus A, et al; Schweizerische Arbeitsgemeinschaft für Klinische Krebsforschung (SAKK) and the German CML Study Group. Impact of additional cytogenetic aberrations at diagnosis on prognosis of CML: long-term observation of 1151 patients from the randomized CML Study IV. *Blood*. 2011;118(26):6760-6768.
11. Fabarius A, Kalmanti L, Dietz CT, et al; SAKK and the German CML Study Group. Impact of unbalanced minor route versus major route karyotypes at diagnosis on prognosis of CML. *Ann Hematol*. 2015;94(12):2015-2024.
12. Alhurajji A, Kantarjian H, Boddur P, et al. Prognostic significance of additional chromosomal abnormalities at the time of diagnosis in patients with chronic myeloid leukemia treated with frontline tyrosine kinase inhibitors. *Am J Hematol*. 2018;93(1):84-90.
13. Verma D, Kantarjian H, Shan J, et al. Survival outcomes for clonal evolution in chronic myeloid leukemia patients on second generation tyrosine kinase inhibitor therapy. *Cancer*. 2010;116(11):2673-2681.
14. Hehlmann R, Voskanyan A, Lauseker M, et al; SAKK and the German CML Study Group. High-risk additional chromosomal abnormalities at low blast counts herald death by CML [published correction appears in *Leukemia*. 2020;34:2823]. *Leukemia*. 2020;34(8):2074-2086.
15. Hochhaus A, Baccarani M, Silver RT, et al. European LeukemiaNet 2020 recommendations for treating chronic myeloid leukemia. *Leukemia*. 2020;34(4):966-984.
16. Radich JP, Deininger M, Abboud CN, et al. Chronic myeloid leukemia, version 1.2019, NCCN Clinical Practice Guidelines in Oncology. *J Natl Compr Canc Netw*. 2018;16(9):1108-1135.
17. Sokal JE, Cox EB, Baccarani M, et al. Prognostic discrimination in "good-risk" chronic granulocytic leukemia. *Blood*. 1984;63(4):789-799.
18. Hasford J, Pffirmann M, Hehlmann R, et al; Writing Committee for the Collaborative CML Prognostic Factors Project Group. A new prognostic score for survival of patients with chronic myeloid leukemia treated with interferon alfa. *J Natl Cancer Inst*. 1998;90(11):850-858.
19. Hasford J, Baccarani M, Hoffmann V, et al. Predicting complete cytogenetic response and subsequent progression-free survival in 2060 patients with CML on imatinib treatment: the EUTOS score. *Blood*. 2011;118(3):686-692.
20. Pffirmann M, Baccarani M, Saussele S, et al. Prognosis of long-term survival considering disease-specific death in patients with chronic myeloid leukemia. *Leukemia*. 2016;30(1):48-56.
21. Hoffmann VS, Baccarani M, Hasford J, et al. Treatments and outcomes of 2904 chronic myeloid leukaemia patients from the EUTOS Population based registry. *Leukemia*. 2017;31:593-601.
22. Pffirmann M, Clark RE, Prejzner W, et al. The EUTOS long-term survival (ELTS) score is superior to the Sokal score for predicting survival in chronic myeloid leukemia. *Leukemia*. 2020;34(8):2138-2149.
23. O'Brien SG, Cork L, Bandiera V, et al SPIRIT 2: Final 5 year analysis of the UK National Cancer Research Institute randomized study comparing imatinib with dasatinib in patients with newly diagnosed chronic phase chronic myeloid leukemia [abstract]. *Blood*. 2018;132(suppl 1). Abstract 457.
24. Akaike H. A new look at the statistical model identification. *IEEE Trans Automat Contr*. 1974;19(6):716-723.
25. Schoenfeld D. Partial residuals for the proportional hazards regression model. *Biometrika*. 1982;69(1):239-241.
26. Bumm T, Müller C, Al-Ali HK, et al. Emergence of clonal cytogenetic abnormalities in Ph- cells in some CML patients in cytogenetic remission to imatinib but restoration of polyclonal hematopoiesis in the majority. *Blood*. 2003;101(5):1941-1949.
27. Feldman E, Najfeld V, Schuster M, Roboz G, Chadburn A, Silver RT. The emergence of Ph-, trisomy -8+ cells in patients with chronic myeloid leukemia treated with imatinib mesylate. *Exp Hematol*. 2003;31(8):702-707.
28. Medina J, Kantarjian H, Talpaz M, et al. Chromosomal abnormalities in Philadelphia chromosome-negative metaphases appearing during imatinib mesylate therapy in patients with Philadelphia chromosome-positive chronic myelogenous leukemia in chronic phase. *Cancer*. 2003;98(9):1905-1911.

29. Terre C, Eclache V, Rousselot P, et al; France Intergroupe pour la Leucemie Myeloide Chronique. Report of 34 patients with clonal chromosomal abnormalities in Philadelphia-negative cells during imatinib treatment of Philadelphia-positive chronic myeloid leukemia. *Leukemia*. 2004;18(8):1340-1346.
30. Deininger MW, Cortes J, Paquette R, et al. The prognosis for patients with chronic myeloid leukemia who have clonal cytogenetic abnormalities in philadelphia chromosome-negative cells. *Cancer*. 2007;110(7):1509-1519.
31. Jabbour E, Kantarjian HM, Abruzzo LV, et al. Chromosomal abnormalities in Philadelphia chromosome negative metaphases appearing during imatinib mesylate therapy in patients with newly diagnosed chronic myeloid leukemia in chronic phase. *Blood*. 2007;110(8):2991-2995.
32. Wang W, Cortes JE, Tang G, et al. Risk stratification of chromosomal abnormalities in chronic myelogenous leukemia in the era of tyrosine kinase inhibitor therapy. *Blood*. 2016;127(22):2742-2750.