

The appropriation of space inside the small
English 'bye-law' terraced house; 1913-1979

Thesis submitted in accordance with the requirements of the

University of Liverpool

for the degree of

Doctor in Philosophy

by

ROBERT GARSDEN MACDONALD

June 1983

VOLUME TWO
ILLUSTRATIONS

Arnold Wesker

'... It's a trap, the East End, to be sentimental and full of cosy longing for "the good old days" ... I mean, *I* may have loved it ... written about it with love, but my family remember it with misery. *I* may be riddled with nostalgia, hoarding the past as though it were food for a time of famine, but not them, not them ... Nothing good about "the good old days" for them ... Being romantic, yes! That's looking back with love, no one minds that, but sentimentality? That's looking back with dishonesty ...'







5.02.



5.03



5.04.

enamel bowl



"TRADITIONAL" KITCHEN



gas cooker



stoneware sink

draining board

local water heater



"MODERN" KITCHEN



Electric cooker

FRIDGE

ILLUSTRATION
Nº. 6.5

"tea
cosy"
bread
bin



tea pot

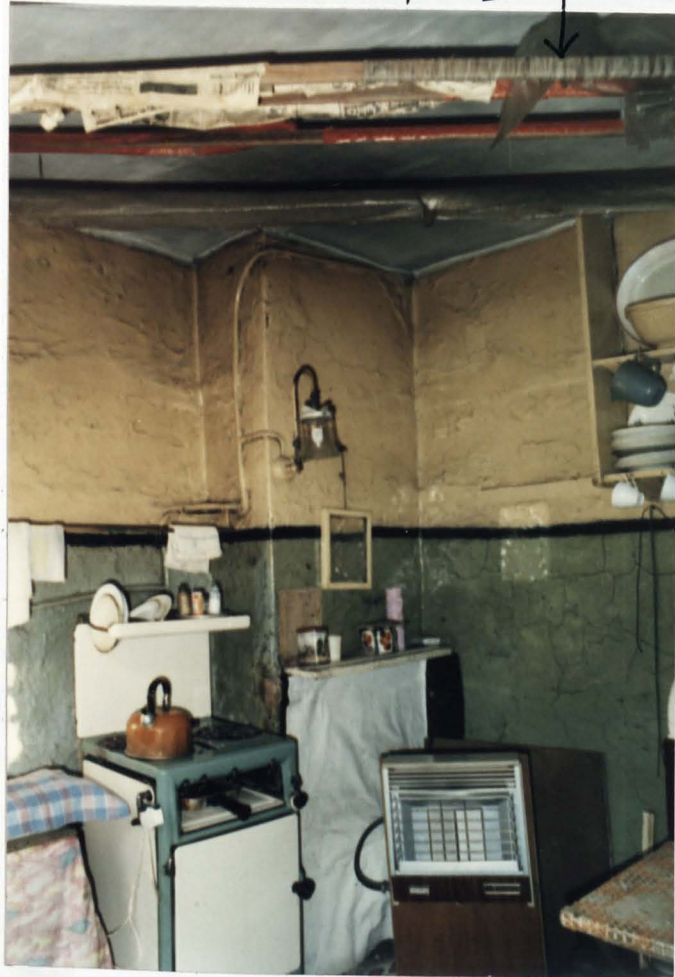
tea cup,
sugar bowl
& bottle
of milk.

"calor"
gas
fire



FRIDGE
FREEZER

clothes pully ↴



stoneware sink.



"Flat
irons"



coal buckets



GAS
LIGHTING



FRONT ROOM
GAS LIGHTING
ELECTRIC
METERS



FRONT ROOM
ELECTRIC
LIGHTING



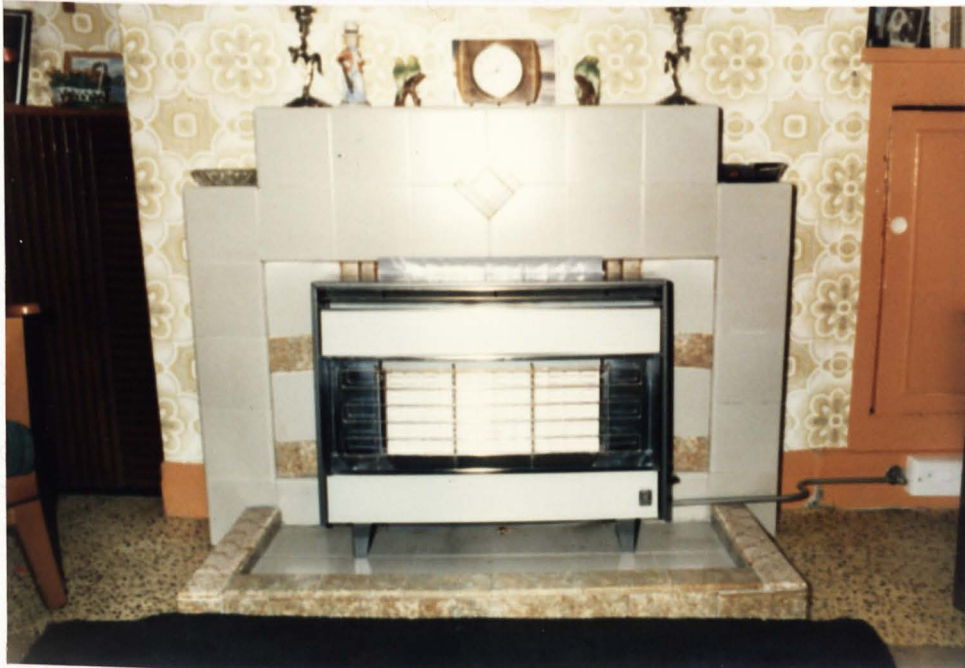
FRONT ROOM
GAS LIGHTING



FRONT ROOM
ELECTRIC
LIGHTING



SOLID FUEL RANGE



GAS FIRE & TILED SURROUND



brass ware

black leaded
range



rice pudding



original
staircase



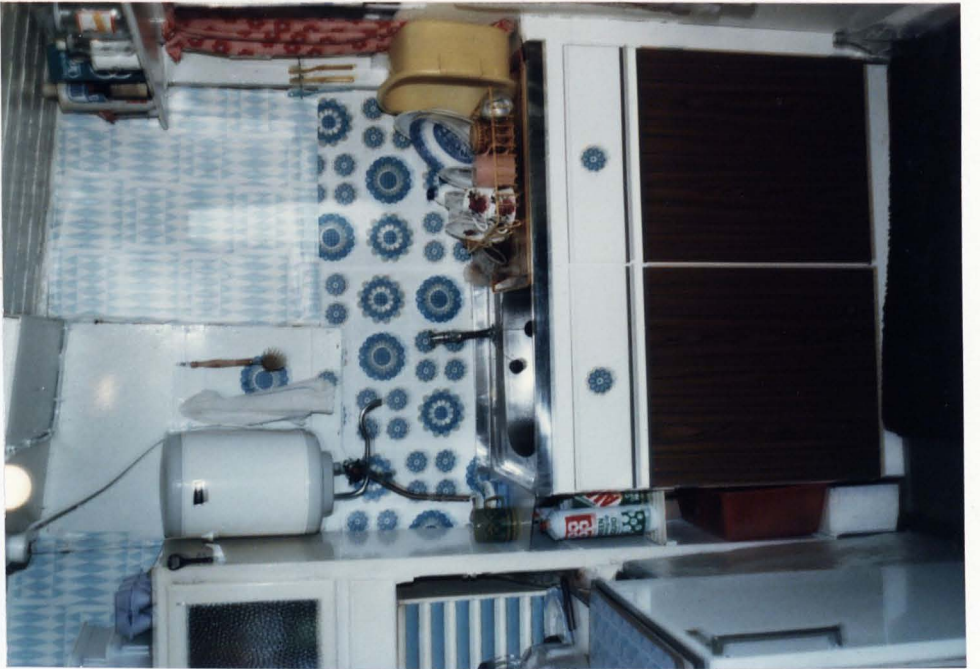
original
clothes
pully



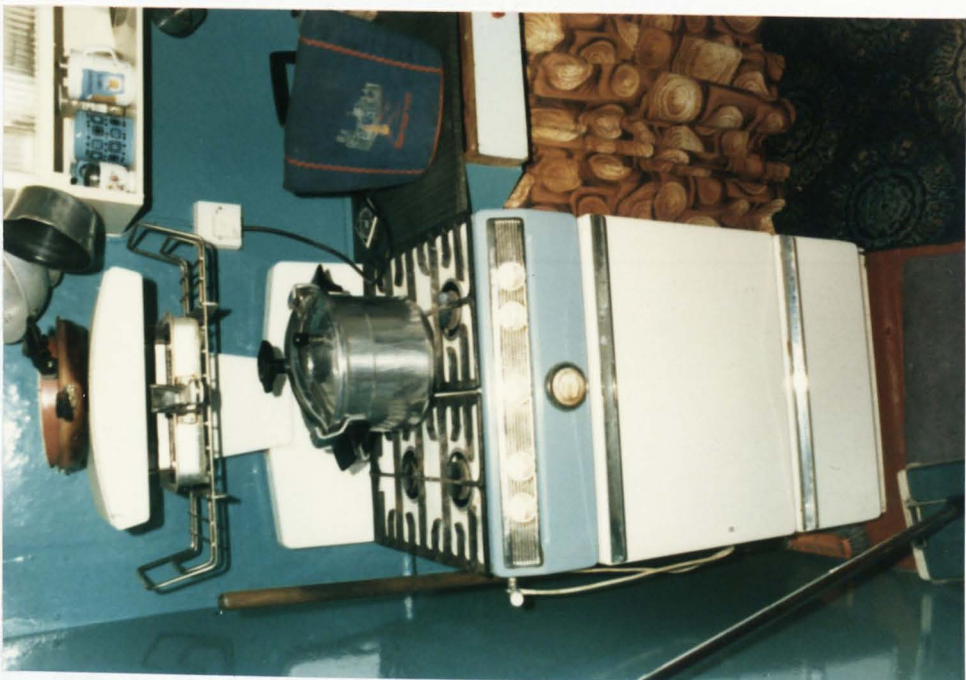
THE OUTSIDE TOILET



6.20.



6.21.



6.22.



6.23



6.24.



75.















8.6.







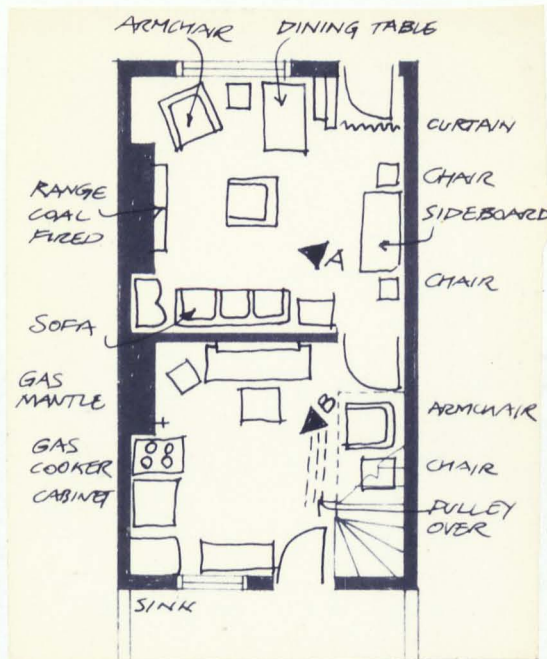
HIGH
MANTLE
PIECE

COAL
FIRED
RANGE



VIEW 'A' ►

THE FRONT ROOM
AS TRADITIONAL
LIVING-FRONT-KITCHEN



THE BACK ROOM
AS TRADITIONAL
KITCHEN - SCULLERY

VIEW 'B' ►



ORIGINAL
STONWARE
SINK

GAS LIGHTING
MANTLE

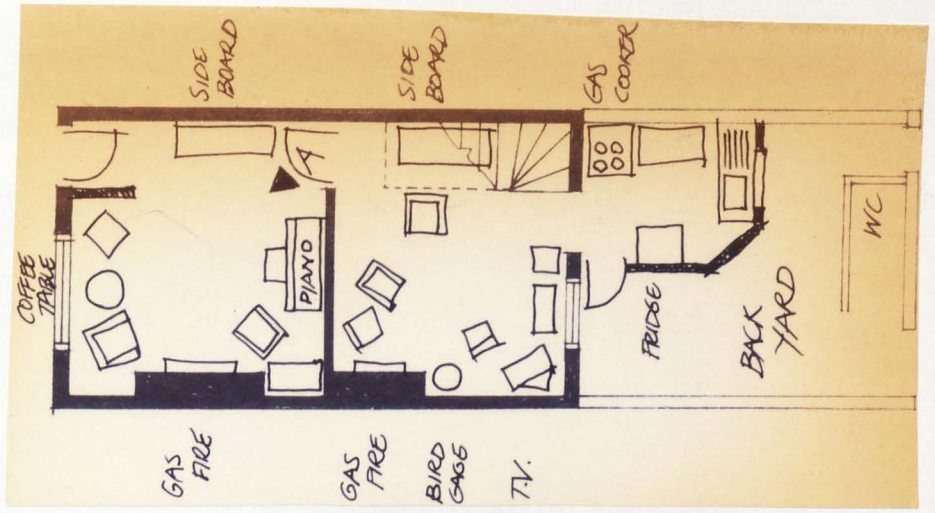
9.4.





9.9.
THE TRADITIONAL "PALOUR"

VIEW 'A' ▶



PIANO
TILED FIRE PLACE & GAS FIRE

SIDE BOARD

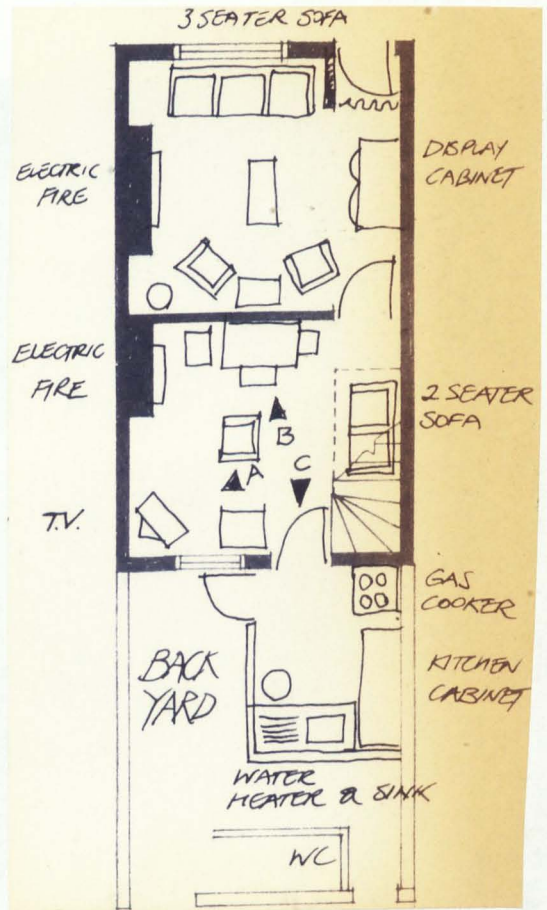


◀ VIEW 'A'

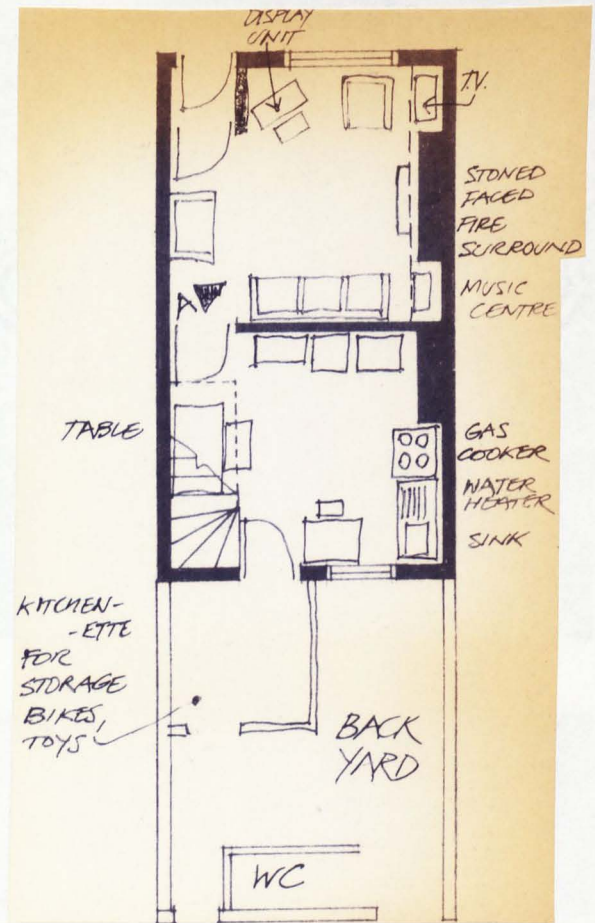
VIEW 'B' ▶



C ▶ THE "KITCHENETTE"



BACK ROOM AS
LIVING-DINING ROOM
9.10.



9.11.

THE FRONT ROOM AS
"LIVING-ROOM."

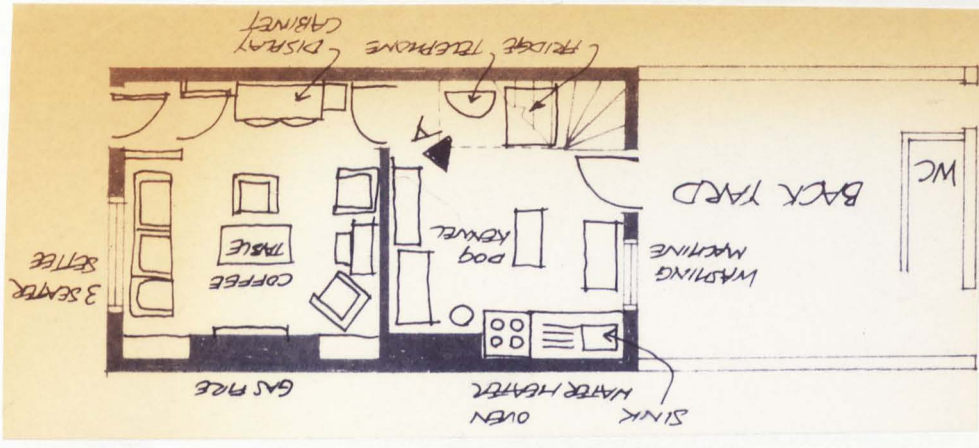
PLASTIC FACED 'STONE' →



VIEW 'A' ▶



9.12.



CLOTHES PILE



VIEW 'A'

DOG KENNEL

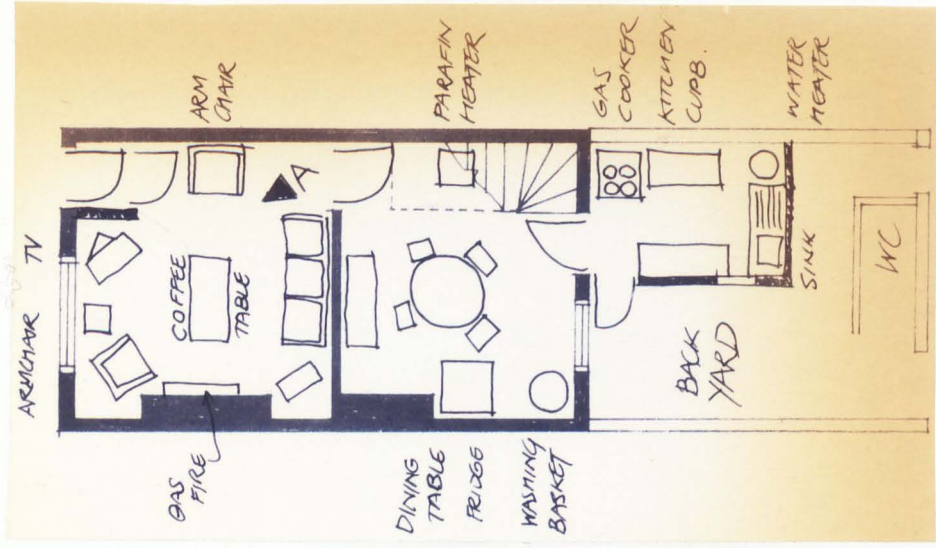
9.13. THE BACK ROOM AS "KITCHEN."

9.14.
FRONT ROOM AS "LIVING ROOM"

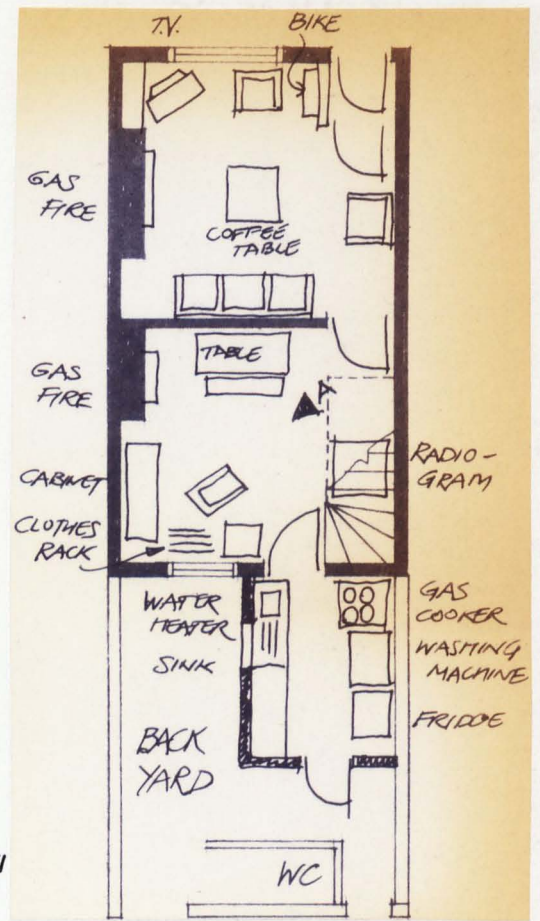
VIEW 'A' ▲



WINDOW ON TO STREET

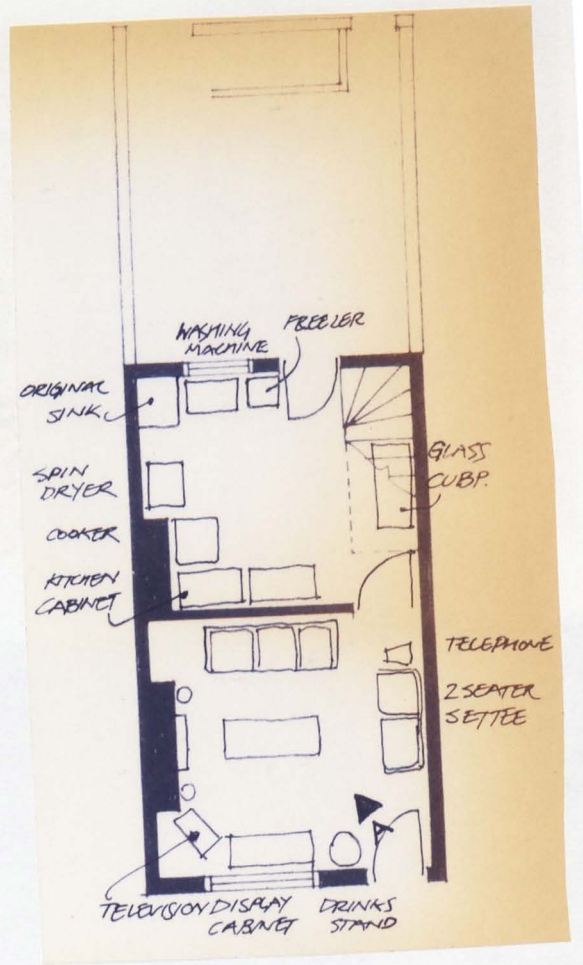


9.15
 BACK ROOM AS "DINING ROOM"



PINE
 TABLE
 &
 BENCH

VIEW 'A' ▶



9.16 FRONT ROOM AS "LIVING ROOM"

WINDOW ON TO STREET



VIEW 'A' ►



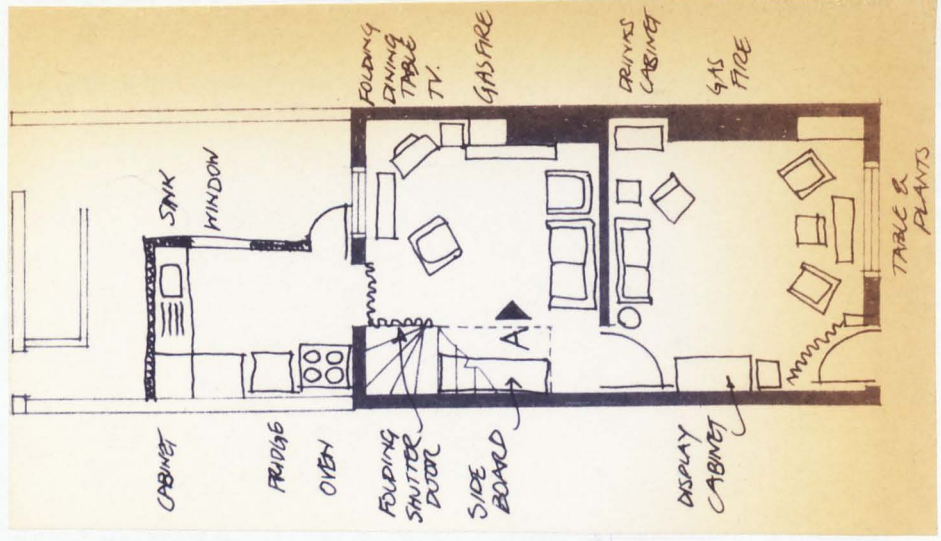
9.17.
BACK ROOM AS LIVING ROOM

WINDOW TO BACK YARD

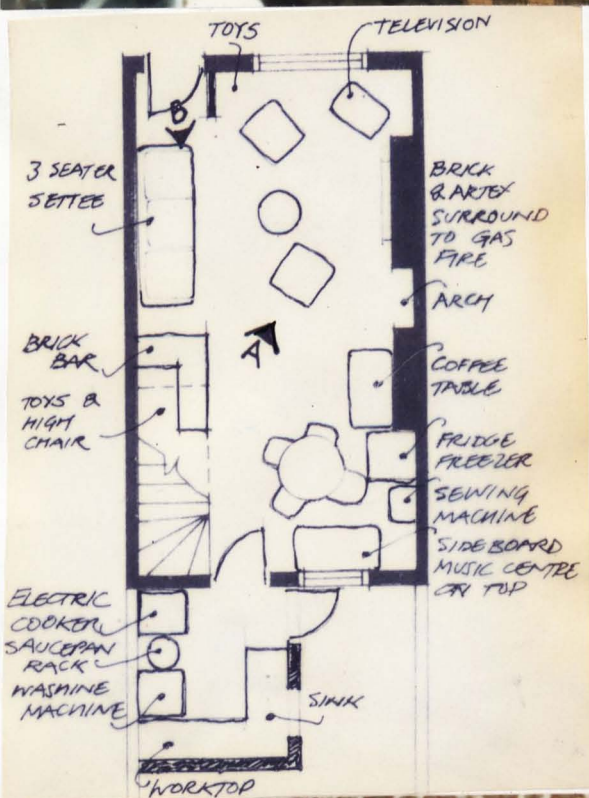


VIEW 'A' ▶

ORIGINAL CHIMNEY



FRONT
DOOR
DIRECTLY
ON TO
STREET.



VIEW 'A' ▶

"THROUGH-
LOUNGE"

9.18.

VIEW 'B' ▶

'DOWNSTAND'
BEAM
MARKS
POSITION
OF
FORMER
WALL



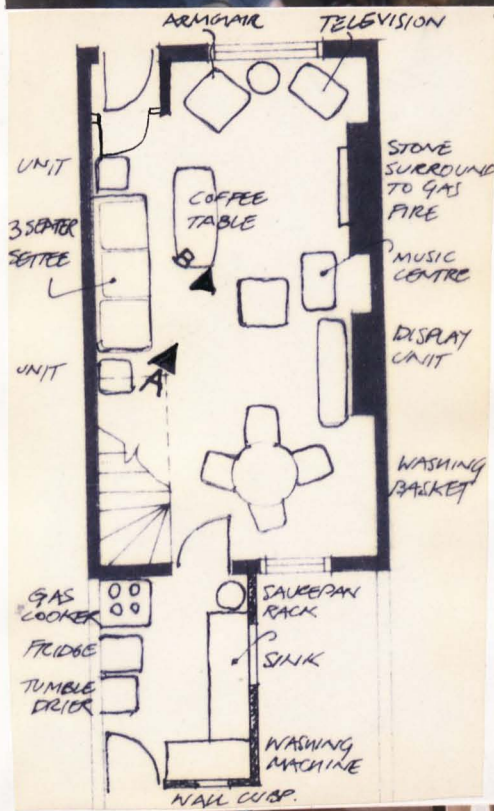
STAIRS

BRICK
BAR

'HALL'
DOOR



VIEW 'A' ▶



"THROUGH-
LOUNGE"
9.19.

VIEW 'B' ▶

STONE
FACED
FIRE
SURROUND

