

Sykes, O. and Nurse, A. (2021) *The scale of the century? – the new city regionalism in England and some experiences from Liverpool*

Author accepted version 10 May 2021 - EUROPEAN PLANNING STUDIES
<https://doi.org/10.1080/09654313.2021.1931044>

*Olivier Sykes, Department of Geography and Planning, University of Liverpool, Department of Geography & Planning, University of Liverpool, Roxby Building, Liverpool, L69 7ZT, England.

olivier.sykes@liverpool.ac.uk

Alexander Nurse, Department of Geography and Planning, University of Liverpool

anurse@liverpool.ac.uk

ABSTRACT

Attention to the city regional scale has fluctuated over time as governments in different countries have sought new 'territorial fixes' to respond to changing systems of production, flows of goods, capital and information, environmental challenges, and demands for renewed political legitimacy of collective action. In England, there have been successive cycles of rescaling, particularly since the 1970s when metropolitan governance structures were created only to be abolished the following decade. Larger regional territories were favoured in the 1990s and 2000s, however, from the mid-2000s onwards the city-regional scale again rose to prominence. The 2010s saw attention shift back to sub-regional territories with the creation of 'Combined Authorities' for 'larger than local' but 'smaller than regional' areas, including for many city-regions. This paper considers the new city regionalism in England and the experience of the Liverpool City Region (LCR). It concludes that whilst exogenous political economic factors and state strategies may stimulate rescaling of territorial governance, it is important to recognise that it is also shaped by distinctive local contexts and practices.

Key words: City regions, Re-scaling, Liverpool, Governance, Spatial planning

1.0 Introduction

City regionalism is currently enjoying a renaissance in many countries (Jones et al., 2015 p.6, Sturzaker and Nurse, 2020, Demazière and Sykes, 2019). Attention to this strategic scale has fluctuated over time as states have sought new 'territorial fixes' (Deas, 2014) in response to changing systems of production, flows of goods, capital and information, environmental challenges, and demands from citizens for renewed legitimacy to underpin collective action. In the United Kingdom there have been successive cycles of territorial reform, particularly since the 1970s. Devolution to Scotland, Wales and Northern Ireland and the creation of the Greater London Authority are key changes. In England, outside London the pattern of reform has been less consistent with more frequent shifts in the scalar focus. Metropolitan governments were created in the 1970s only to be abolished by the mid-1980s. From the 1990s into the early part of the 2000s larger regional territories were favoured (Jones and McCleod, 1999). The city-regional scale then returned to prominence both in the work of researchers and through initiatives driven by local government cooperation in certain large metropolitan areas – notably Manchester (Hodson et al., 2020). In the 2010s the emphasis on sub-regional territories was accentuated with the creation of 'Combined Authorities' for 'larger than local' but 'smaller than regional' areas, notably many city regions (Harrison, 2012). These shifts have redefined the key scales and sites at which certain competences are concentrated and exercised. They have been driven both by a combination of 'exogenous' structural shifts and state-strategy, and endogenous dynamics within territories. The present paper engages principally with the second of these drivers through a consideration of the experience of the Liverpool City Regions (LCR) in adapting to the 'new city regionalism' in England. The paper firstly reviews the evolution of sub-state government in England from the reforms of the 19th. Century through to the creation of Combined Authorities (CAs) in the 2010s. Secondly, it situates the new city regionalism in England against its wider context and identifies a set of analytical themes. Thirdly, the experience of the Liverpool City Region (LCR) in adapting to the new city regionalism is considered in light of these. This account is supported by a review of published materials and an interview with the leader of the team developing the new Spatial Development Strategy (SDS) for the city region. Finally, the conclusion considers the extent to which exogenous political economic factors and (nation)

state strategies and practices in given localities interact in the rescaling of territorial governance.

2.0 Historical Background

2.1 Scaling-up local government to meet the requirements of an urban nation (1888 – 1972)

In the 19th century England experienced rapid urbanisation and structures of local government were reformed to address the representative, economic, social and physical needs of expanding urban areas (Briggs, 1963, Hunt, 2005). Thus 'The Local Government Acts of 1888 and 1894 introduced a comprehensive pattern of county councils, and district and parish councils' and the 1888 Act created "61 'county boroughs', large or historically significant urban areas falling outside county council administration" (Sandford, 2019)(Sandford, 2019, p.6). This system which was to remain largely unchanged (though with some boundary changes, Dockerill, 2020) until the final third of the 20th century. The 1930s and 1940s saw reflection, on the regional, industrial and planning issues facing the UK. The Barlow Report (1940) considered the distribution of the industrial population; the Uthwatt Report compensation and betterment (1942); the Scott Committee (1942) rural land use, and, in the same decade Patrick Abercrombie prepared his two plans for London. The later 1940s saw the introduction of a comprehensive planning system and the state also pursued a new towns programme and regional policy (Alexander, 2009). Yet it has been argued that 'most of the period from 1945 to 1974 was distinguished by the perpetuation of a fragmented system of local government and planning' and that this 'worked against the capacity to plan metropolitan regions as a whole, and also frequently divided responsibility for homogenous metropolitan areas between urban and shire authorities' (Roberts et al., 1999). The Herbert Commission on local government in London (1960); the Redcliffe-Maud Commission on local government in England (Wise, 1969); and, the Wheatley report on local government in Scotland (1969) were to lead to a sequence of reforms in response. A Greater London Council (GLC) was established in 1964 and major reform under the Local Government Act, 1972, introduced a two-tier local government structure across England and Wales based on county and district councils, and six new Metropolitan County Councils (MCC) in the largest English

conurbations to address key strategic planning and development issues (Table 1). The Herbert Commission had in fact recommended a more widely drawn area for the GLC, whilst a dissenting report by a member of the Redcliffe-Maud Commission, Derek Senior, had recommended ‘the creation of 35 city regions and 148 districts’ with a ‘map of recommendations for areas’ which ‘placed greater weight than the main report on patterns of economic activity and less on traditional units, believing that local authorities should be based on “the potential service and commuting hinterlands of a major centre for the functions associated with planning, transportation and development” (Sandford, 2019, p.7 citing Royal Commission on Local Government in England 1966-69b, p.20)

Name of Metropolitan County	Constituent Local Authorities (municipalities)
Greater Manchester	City of Manchester, City of Salford, Bolton, Bury, Oldham, Rochdale, Stockport, Tameside, Trafford, Wigan
Merseyside	City of Liverpool, Knowsley, St. Helens, Sefton, Wirral
South Yorkshire	City of Sheffield, Barnsley, Doncaster, Rotherham
Tyne and Wear	City of Newcastle, City of Sunderland, Gateshead, South Tyneside, North Tyneside
West Midlands	City of Birmingham, City of Coventry, City of Wolverhampton, Dudley, Sandwell, Solihull, Walsall
West Yorkshire	City of Leeds, City of Bradford, City of Wakefield, Calderdale, Kirklees

Table 1 – Metropolitan Counties in England, 1974 – 1986

Under the new system, the MCCs provided a strategic overview and capacity to act in relation to: land use planning (through county structure plans), transportation, economic development, environmental enhancement & waste management - local planning was to be the responsibility of individual lower tier metropolitan districts.

2.2 *Smaller scales for a smaller state? - dismantling the metropolitan scale (1980s)*

The fracturing of the social democratic and Keynesian political-economic consensus and rise of 'neoliberal' perspectives promoting a smaller state in the 1970s saw planning increasingly perceived as a potential hindrance to the efficiency of land markets and the development industry. The context was also challenging for regional policy, with state spatial policy in many countries focussing increasingly on 'urban problems' in the face of economic restructuring, mass unemployment and urban unrest (Couch et al., 2011; Demazière and Sykes, 2021). Regional policy in many countries became mainly concerned with 'emergency' interventions, leading Desjardins (2017: 66) to speak of '*L'aménageur comme pompier*' (the regional planner as 'firefighter'). There was also an ideological undercurrent to these evolutions, notably in the UK, where regional policy was considered by elements of the government to be likely to be palliative at best, and at worst divert state resources from where they could be more precisely targeted to support productivity, or address market failure. Simultaneously, local government was frequently caricatured as an inefficient and potentially unruly entity, with the potential to disrupt central state strategy and policy agendas.

Under the Conservative government, the MCCs and the GLC were abolished in 1986, with strategic and local planning powers being transferred to their former constituent local authorities. Some argued that this led to a loss of strategic overview, as interventions targeted more discrete areas and locations within conurbations, notably the large urban regeneration sites created by industrial restructuring (Couch et al., 2011). A new system of *Unitary Development Plans* (UDP) combined general/strategic (Part I) and more specific policies (Part 2). The wider strategic dimension was to be provided by an informal system of collaboratively produced Strategic Planning Guidance (SPG). Joint boards were also maintained to coordinate functions such as Policing, fire services, public transport and, in some areas, waste management. Despite this, it has been argued that there nevertheless emerged a 'strategic policy vacuum' (Tewdwr-Jones and Allmendinger, 2007 p. 31). Inter-municipal cooperation kept the metropolitan scale 'alive' and provided some strategic thinking and a proto city regional institutional ecology took root in some places, notably Greater Manchester (Tomaney and McCarthy, 2015).

2.3 *Bigger is better? - the return of the 'larger than local' scale and the experiment in English regionalisation (1990 – 2010)*

When attention to 'larger than local' development issues re-emerged in the 1990s, this was with a scalar orientation towards large 'standard regions' rather than the metropolitan scale (Jones and McCleod, 1999). The election of the Blair government in 1997, saw the creation of Regional Development Agencies (RDAs) tasked with developing Regional Economic Strategies (RES) and Regional Assemblies to ostensibly oversee their work (Hall (2007) Shields and Wray, 2019). Devolution to Wales, Scotland, Northern Ireland marked a significant constitutional change whilst the new Greater London Authority (GLA), with its power to make and adopt metropolitan-scale Spatial Development Strategy (SDS) – the London Plan; reintroduced the metropolitan scale of government in England's capital for the first time since the 1980s. In 2004 the regional planning system was reinforced in England with statutory Regional Spatial Strategies (RSS) replacing advisory 'Regional Planning Guidance' (RPG). County Structure plans were abolished with Local Development Frameworks (LDF) being introduced having to accord with the relevant RSS for their region. The RSS structure allowed for sub-regional plans to be prepared for relevant sub-areas such as city regions.

Regionalisation was undermined, however, by difficulties in complementing the technocratic 'output' problem solving legitimacy of regional planning with the 'input' legitimacy of the governed (Taylor, 2019). A referendum in 2004 saw the establishment of an elected regional assembly in the north east of England attacked by the populist press and decisively rejected by voters (Shaw and Robinson, 2007). This led to greater attention to other scales such as the city region, the local government area, and the neighbourhood level.

2.4 *The 'return of the city region' (2000s – 2020)*

The 'Urban Renaissance' policy agenda (1997-2010) (Rogers, 1999), coupled with shifts towards reinvigorated urban economies, led to a 'return of' and 'return to' the city (Rae, 2013). This reflected the wider trends within globalisation (Sassen, 1991), notably new rounds of urban-focussed accumulation (Harvey, 1989), and cultural movements (Florida, 2004). In England, there was a new acknowledgement of the economic, social, cultural importance of

cities. City-regions were conceived as drivers of regional economies, change, innovation, and creativity in a more knowledge-based economy - though it was also suggested England's 'Core Cities' were still not 'punching their weight' in comparison with Europe's other leading regional cities (Parkinson et al., 2004). Recalling the debates of the 1960s and 1970s, there was also attention to 'functional' geographies (e.g. Travel to Work Areas). At the same time the regional scale was being critiqued as too vast in comparison to sub-areas such as city-regions, with increasing calls for more sub-regional organisation of local development. City regions were presented by their advocates as more coherent 'larger than local' spaces, with sufficient critical mass in economic, spatial management and governance terms, and greater potential for citizen identification. The *economic* and *political* case for city regions argued that they could both help bridge economic gaps across England and reboot the process of devolution and democratic engagement.

The example of London, with its elected mayor and Greater London Assembly (GLA), and responsibilities for: strategic spatial planning (with the creation of a London Plan; housing; transport (with a generously-funded transport authority, Transport for London); economic development; environment; Policing; fire and emergency planning; Culture/sport; health; and, energy, also served as an inspiration. Elsewhere the city regional principle was reflected in the Northern Way Growth Strategy (NWGS) led by the three northern RDAs with the aim of bridging the £29 billion output gap between the north of England and the rest of the UK. This sought to promote partnership working in the North and was principally focussed on eight city regions seen as the key to making the northern economy grow faster (Table 2).

Region	City Regions
North East England	Tees Valley Tyne and Wear
North West England	Central Lancashire Liverpool City Region Manchester City Region
Yorkshire and the Humber	Hull and Humber Ports Leeds City Region Sheffield City Region

Table 2 – The Eight City Regions of the Northern Way Growth Strategy (2004)

In the late-2000s Multi Area Agreements (MAAs) sought to foster cross-boundary working (Nurse, 2012), whilst in 2009 new legislation allowed the creation of new inter-municipal entities called ‘Combined Authorities’ (CAs). This paved the way for a return of ‘Harder city-regional structures’ (Hodson et al., 2020, p. 203) in the following decade.

2.5 *Regions out, city regions in – post-2010 rescaling*

The 2010-2015 Coalition government introduced consequential changes to how sub-national development was scaled and administered, with stated aims of rebalancing the economy, reducing the budget deficit, and encouraging localism (Sturzaker and Nurse, 2020). Severe public spending cuts were enacted impacting the ability of local authorities to provide services and deliver a local policy agenda. The structures of regional economic and spatial planning were rapidly abolished (Nurse, 2015a) and economic development functions passed to sub-regional *Local Enterprise Partnerships* (LEPs), ostensibly centred on functional economic areas (DCLG, 2010a, DCLG, 2010b, Pugalis, 2011). This was a much finer geography, with 39 LEPs replacing the 8 English RDAs, many based on city regions. They could bid for ‘Growth Deals’ and were required to draw up multi-year strategic economic plans, setting out the priorities for long-term growth in their areas. Land use planning reverted to local planning authorities and in some places community, or business-led, neighbourhood plans were adopted.

In 2011 came a series of 'City Deals' (DCLG, 2011), initially with the Core Cities¹. These offered an increase in economic planning powers in return for referenda on changing their mode of governance towards having a directly elected executive mayor (this was rejected in all but one case, Bristol, in 2012) (Sandford, 2015).

In 2011 the first sub-regional Combined Authority (CA) was created for Greater Manchester, generally seen as having been the most successful city region at sustaining inter-municipal city regional working after the abolition of metropolitan scale government in the mid-1980s. This 'exemplar' (Hodson et al., 2020, p.201) English city-region has been closely scrutinised by commentators (Jenkins, 2015), academic observers (Haughton et al., 2016) and those watching from other places (Parkinson et al., 2016). Further CAs were created in 2014 and 2016 with these bodies acquiring devolved powers over economic and transport planning, and bringing together the leaders of each LEP's constituent local authority districts as a means of restoring some accountability to sub-regional decision making (Nurse, 2015a).

In June 2014, the Chancellor of the Exchequer, George Osborne, announced plans for what he termed the 'Northern Powerhouse' (NP) (Osborne, 2014). This was underpinned by notions of urban agglomeration and aimed to rebalance the UK economy away from London and the South East. It primarily centred on the heavily urbanised east-west belt running from Liverpool, across Manchester, and over the Pennines to Leeds and Sheffield, as a place where it was argued that comparable economies of scale and agglomeration could be achieved (Figure 1).

¹ Birmingham, Bristol, Cardiff, Glasgow, Leeds, Liverpool, Manchester, Newcastle, Nottingham and Sheffield and Glasgow and Cardiff - <http://www.corecities.com/>

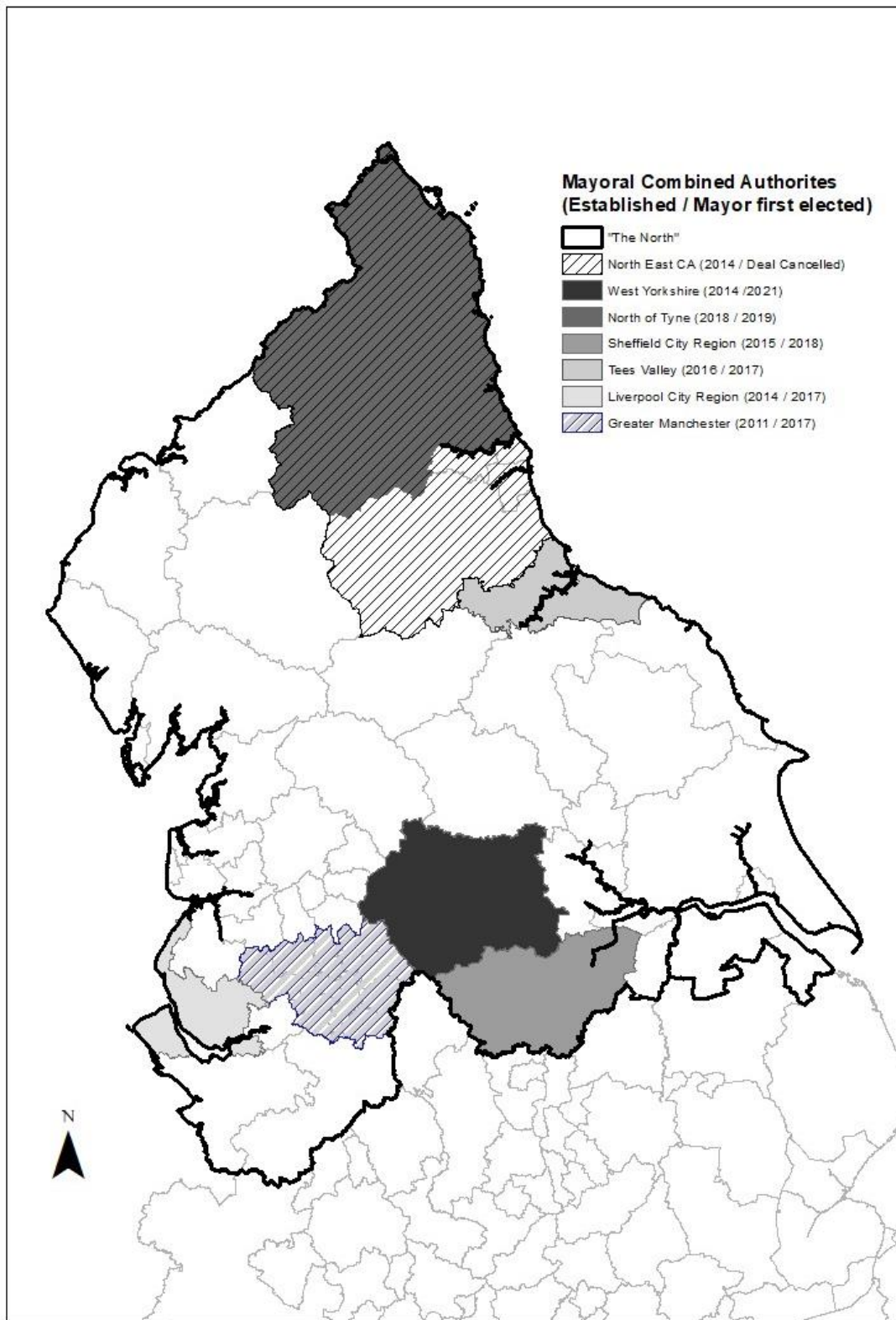


Figure 1 - The Sub-regions within the Northern Powerhouse

Source: Alexander Nurse with 'Office for National Statistics, 2011 Census: Digitized Boundary Data (England and Wales) [computer file]. UK DataService Census Support. Downloaded from: <https://borders.ukdataservice.ac.uk/>

The NP was to be realised through the negotiation of ‘devolution deals’ between the leaders of each city region and central government. The basic ‘deal’ would be £900m spread over 30 years to spend on local infrastructure projects, control over skills agendas, and the assumption of control over policing and fire services. Extra powers and resources could also be negotiated, for example, Manchester secured a further £300m for housing, and in 2015 assumed control over health spending (Sandford, 2020, pp.18-20). Each city region was expected to introduce a directly elected ‘metro-mayor’ with the first elections in some areas taking place in 2017. Promises were also made of investment in infrastructure for expanded travel-to-work areas in the north, notably rail electrification, and a mooted high-speed east-west rail link termed HS3. In time the NP was joined by the Midlands Engine and other similar initiatives.

3.0 Situating city regionalism in England

3.1 Developing themes of enquiry

The recent evolutions outlined above amount to the biggest shift in how the largest English city regions are governed since 1986 and the abolition of the Metropolitan County Councils, but where do they fit in relation to the ‘global trend towards devolution’ (Rodriguez-Pose and Gill, 2003, p 336) of recent decades? There are a number of themes within the wider literature on city regionalism and scale construction which have been reviewed and inform the identification of contemporary themes of enquiry in relation to the new city regionalism in England (Sections 3.2 – 3.6). Rodriguez-Pose and Gill (2003, p.334) contend that in analysing processes of devolution, there are three factors which might be considered ‘subnational legitimacy... decentralisation of authority and resources’. Jonas and Moiso (2018, p.351) meanwhile draw attention to the links between the rise of city regionalism and state interests and strategy arguing that ‘that city regionalism is becoming an important medium through which the state exercises its powers in the 21st century’. Similarly, Sturzaker and Nurse (2020) situate their account of the evolution and rescaling of planning and urban governance in the UK within a framework that relationally connects episodes of rescaling and institution building at lower scales with the policy agendas and strategies pursued by central government. Given that city regionalism is shaped by such strategising and the interests of different actors at different scales, the question arises of who is privileged by processes of

rescaling (Jessop, 1990, Beel et al., 2018)? This relates to the question of the degree subnational legitimacy (Rodriguez-Pose and Gill, 2003) which newly configured scales may accrue. Notably whether new territorial configurations like city regions can build democratic 'input' legitimacy and support from the governed (e.g. in the form of engagement with events like elections), as well as the 'output' legitimacy in terms of results (e.g. raising competitiveness; addressing challenges of sustainable development etc.) which is often cited by states, local actors, and professionals as a justification for their creation (Taylor, 2019).

The interrelated issues outlined above also reinforce Jonas and Moisió's (2018) conclusion that 'city regionalism is a contingent expression of wider territorial-political dilemmas confronting the national state which are partly informed by, but not reducible to, global neoliberal logics of economic growth and competition' (p.366). They also echo in debates surrounding the New Regionalism and New Economic Geography in the 1990s and 2000s where some accounts were accused of 'following a functionalist discourse of globalisation backed up by neoliberalism' with 'regional analysis' being 'shrouded in a crude economism exhibiting little imaginative understanding of local structures of feeling, [and] place-based identities' (MacLeod and Jones, 1999, p.670). In response Lovering (1999, p. 393) called for 'a renewed emphasis on careful theoretical work' and 'more discriminating empirical studies'. Work at the time which did empirically explore the emergence of regional institutions, such as that by Burch and Holliday (1993), pointed to the importance of 'voluntaristic' action by local actors and 'the role of personality and circumstance' in such processes (pp. 46-47; 49). More recently, Sturzaker and Nurse (2020), have similarly emphasised, that the form city regionalism takes in a given context emerges from an interplay of wider forces, the distinctive histories of sub-state territorial governance in different states, and the experience of specific city regional territories. Recognising such issues, the themes below are informed by the wider literature on city regions, but also 'inductively' derived from the evolving English situation. They are briefly reviewed below before the paper moves on to reflect on the case of the Liverpool City Region.

3.2 *City regional governance in England and the state (is it here to stay?).*

The English case provides striking evidence to support the idea that accounts of the emergence of city regions need to consider the strategising and interests of the state in which they are situated (Moisio and Jonas, 2018). Taking a 'long view' of the history of frequent rescaling in England, for example, it is clear that the state at different times has seen an interest in promoting, or discouraging, the emergence of institutions and governing capacity at city regional scale. An initial theme of enquiry when considering the new city regionalism in England then is whether the metropolitan city-regional scale is 'here to stay' this time? Will it be the 'scale of the century', or just of a decade at most, in-keeping with past cycles of sub-national rescaling and searches for new 'spatial-fixes' (Harvey, 1981)? Many of the new CA boundaries in the larger urban areas bear a striking geographical resemblance to those of the MCCs (Table 1 above) even though functional and Travel to Work Areas have expanded since the 1970s. Devolution in England remains active, even if other scales and territories have vied for attention in recent years, notably the UK state scale since the 2016 EU referendum (Sturzaker and Nurse, 2020) and the territories of UK-subsumed territories like Scotland and Northern Ireland. The growing number of CAs, signing of devolution deals, and discursive staying power of the NP initiative, however, suggest that the city regional agenda is here to stay in England, for the time being at least.

3.3 *Legitimacy and citizen 'buy-in' to the new city-regional scale.*

As noted above, one theme that Rodriguez-Pose and Gill (2003, p.334) contend is important in analysing processes of devolution is 'subnational legitimacy'. Here it can be observed that, whilst the political and legislative basis of CAs and devolution 'deals' seems quite resilient, its local 'input' political legitimacy (Taylor, 2019) still appears weak. In bringing forward the CAs, the 2010–2015 coalition sought to bolster the legitimacy of a process largely informed by the economic and business focused LEPs (Pugalis and Fisher, 2011) through direct elections for CA mayors. However, voter turnouts in the first elections held for CA mayors in some areas in 2017 were disappointingly low for those hoping to see a reinvigoration of representative democratic participation at a strategic 'larger than local' scale (Table 3). Though it is true that voter turnouts for local elections in England are generally low compared to many other parts

of Europe (Wilks-Heeg and Clayton, 2006), this was still an indicator of low citizen ‘buy-in’ to the new scale.

Combined authority	Ballots at the count	Turnout (%)
Cambridgeshire & Peterborough (C&P)	204,302	33.6%
Greater Manchester	573,543	28.9%
Liverpool City Region	291,449	26.1%
Tees Valley	103,767	21.3%
West Midlands	523,201	26.7%
West of England	199,519	29.7%
Total	1.9m	27.8%

Table 3 – Electoral Turnout Figures for Combined Authority Mayoral Elections, 2017

However, legitimacy may not simply be derived from the input of electoral events, but as Schmidt (2013) notes through ‘throughput’ legitimacy derived from more ongoing citizen engagement in governing decisions. In some places (notably Greater Manchester) there is emerging evidence that a ‘hardening’ of city regional governance structures and notably the introduction of statutory spatial planning at the metropolitan scale has potential to create an arena through which citizens might engage more ‘disruptively’ in city regional politics and agenda setting than was the case under previous more informal ‘public-private’ city regional ‘regime led’ governing arrangements (Hodson et al., 2020, p.214).

3.4 Spatial selectivity and planning

The spatial selectivity of city regional agendas and the inter-regional city regionally focussed initiatives like the NP (Nurse, 2015b), with their apparent focus on larger urban places, raises issues at a time when smaller so-called ‘left behind’ towns and areas are in political focus (Halliday and Walker, 2020). Here again the city regional agenda becomes enmeshed with state strategy and power projection (Jonas and Moisiu, 2018). Notably in the English context it must sit alongside the national government’s sponsorship of an agenda for towns and smaller places – one which has rapidly become mired in accusations of cronyism political ‘pork barrelling’ (Knott, 2021).

At the intra-city regional scale there are also questions about how city regional agendas can be advanced coherently and consensually if there are trade-offs to be made between different areas - between central cities and peripheral cities/towns, peri-urban and rural areas etc.? New inter-scalar relations and tensions may arise around how a wider, or ‘aggregate’, city regional interest is defined and pursued, especially if any constituent sub-areas feel it not to be in their best interests - e.g. the development of major infrastructure schemes, or key sites, which lie on the territory of given municipalities within a city region.

One arena and mechanism through which these issues may be addressed is through spatial planning at city regional scale as a key facet of the institutional ‘hardening’ of this scale (Hodson et al., 2020). The return of the city since the 1990s has led to regrowth and processes of re-urbanisation (Dembski et al., 2019) and regeneration, which have seen many major

urban centres near saturation in terms of the remaining land/sites available for development (O'Brien and Matthews, 2015). Consequently their surrounding city-regional spaces are increasingly seen as yielding viable sites to continue urban growth agendas. But aligning the interests of different constituent territories and citizens, and seeking consensus around a strategic vision and planning policy at city-regional scale can be challenging. The first campaign for the election of city-regional mayor Greater Manchester in 2017, for example, became politicised around the emerging Greater Manchester Spatial Framework (GMSF) and proposals for revisions to Green Belt designations (Fitzgerald, 2017). As Moisiu and Jonas (2018) note 'bringing together systems of governance and city-regions is often characterized by political struggles and heated contestation' and 'The same applies to the tailoring of city-regional spatial planning systems which would deal with issues such as land use, transportation, housing or economic development'. Given that the model and scope of the renewed metropolitan spatial planning varies between city regions, one theme of enquiry might be how this interacts with and perhaps shapes the tone and capacity of spatial governance at this scale.

3.5 *Austerity*

Rodriguez-Pose and Gill (2003, p.334) contend one factor to be considered in analysing processes of devolution is the 'decentralisation of authority and resources'. The city regional agenda in England in the 2010s has evolved against the background of the wider impacts of the socially regressive austerity cuts which have been made to the budgets of many of the local governments which constitute the CAs in the 2010–2020 period. Whilst the entrepreneurial orientation of evolving city-regional governance can lead to bullish claims being made about future prospects – for example, the 'heroic GVA growth assumptions of 2.5% year on year' in the draft GMSF (Hodson et al., p. 206); these sit alongside the reality for many municipalities of deep cuts to core budgets. Such cuts have hit many places in the north of England hardest (Centre for Cities, 2019). Though devolution deals bring a certain amount of new resources to the CA areas (Pidd, 2020), the underlying picture is one where their constituent authorities' core budgets have often been heavily reduced.

3.6 *The 'European question'*

The city regional agenda has had to evolve against the backdrop of the consequences of the UK's referendum on membership of the European Union in 2016. Here again state level processes and interests set the context for the city regional agenda. The 'great majority of available evidence suggests that Brexit is likely to make the UK's interregional inequalities worse than they already are' (Billing et al., 2019 p. 757). It also modifies the opportunity structures of place-based policy, given the large role that the EU has played in regional policy in the UK over the past 40 years (Sykes and Schulze-Bäing, 2017).

Engagement with the European context has also been a driver of much thinking about city regions in England in the 2000s and 2010s, including that of central government. Research has demonstrated that 'countries that have high-performing cities beyond the capital city also have higher-performing and better balanced economies' (Parkinson, 2019, p.105). And EU support has not just been significant in quantitative financial terms, but has had other qualitative elements which have boosted place-making and governance potential, such as the stability of multiannual funding programmes and, relatedly, the enhanced autonomy that comes with having a dedicated and 'independent' source of support with which to engage in negotiations with other actors (e.g. national government and the private sector). These attributes have been particularly significant in the context of the austerity mentioned above (Nurse and Fulton, 2017).

In the wake of the 2016 EU Referendum the pursuit of national scale industrial policy (Mance and Bounds, 2016) came to the fore, but as some have noted this is not a substitute for more place-based forms of policy (Industrial Communities Alliance, 2017). Questions remain too about how well-tailored new Local Industrial Strategies (LISs) aligned to national sectoral goals will be to the place-based potential of different territories (Billing et al., 2019; Nurse and Sykes, 2020), or even if these documents will be retained (Hill, 2021). A replacement for the EU Cohesion Policy following 'Brexit' is to be called the UK Shared Prosperity Fund (UKSPF) (Wells, 2020) which has raised concerns about recentralisation of funding. Combined with the accusations of political favouritism and lack of objectivity associated with other funds

ostensibly dedicated to 'levelling-up' and the development of towns (Knott, 2021) this means that the funding context for city regional development remains uncertain and contested.

The remaining sections of this paper explore the themes above in the context of the Liverpool City Region (LCR) and its new city regional Combined Authority.

4.0 The new city regionalism in practice – some scenes from Liverpool

4.1 Context

Liverpool is the main city of a conurbation of approximately 1.5 million people. Most of this is within the metropolitan county of Merseyside which had a Metropolitan County Council (MCC) from the mid-1970s until the mid-1980s. At that time, against a complex backdrop of long term social and economic decline (Cocks, 2010, Couch, 2017, Murden, 2006, Parkinson, 2019, Sykes et al., 2013, Shaw and Sykes, 2016), municipal governance in Liverpool was tumultuous. Local leaders of the 'Militant' tendency pursued a policy of municipal development at odds with the financial restraints imposed by the central government of Margaret Thatcher (Parkinson, 1985, Frost and North, 2013). The abolition of MCC in 1986 removed the metropolitan scale of comprehensive government, though joint authorities remained to coordinate transport, waste, policing, and fire services. The MCC had also prepared a structure plan (Merseyside County Council, 1979) which promoted urban regeneration and set out a Green Belt for the metropolitan area (Dockerill and Sturzaker, 2019). The need for regeneration in the 1980s led to the creation of the central government initiative, the Merseyside Development Corporation, whose remit covered much of the inner urban areas of the conurbation including large areas of dockland and waterfront.

As the 1990s dawned the agenda of new leadership in the core city of Liverpool was to 'make the place normal' (Leader of Liverpool City Council, Harry Rimmer, cited in Parkinson, 2019, p.47). The decade was also characterised by vision and strategy making at the metropolitan scale driven by the designation of the area as an EU Cohesion Policy 'Objective One' region. This status reflected the fact that GDP per capita in the sub-region was below 75% the average of that in the then EU 15 states. To access the large sums of support available from the EU to address this situation, the local authorities and their partners in the city region were required

to work together to define strategic objectives at the city regional scale (Parkinson, 2019; Sykes et al., 2013). As well as the high level of funding for initiatives to support the social, environmental and economic recovery and development of the area, this need to work in a coordinated manner provided a considerable fillip to partnership and joint-working.

Major programmes of EU support were renewed in the 2000s helping the city region and its people to develop in social, economic, physical and environmental terms, with the progress being marked symbolically by the award of the status of European Capital of Culture (ECoC) 2008 to Liverpool. The early years of preparing this were beset by instability and resignations at the Liverpool Culture Company set-up to deliver the event (O'Brien, 2011). But the city and its partners turned things around dramatically and ECoC 2008 delivered an extensive cultural programme and an estimated £753.8 million in additional direct visitor spend across Liverpool, Merseyside and the wider north west region (Garcia et al., 2010). ECoC 2008 also contributed to a positive shift in perceptions of Liverpool and Merseyside, both within the area and beyond (García, 2010). The expectations of some commentators that Liverpool would not be able to successfully deliver were confounded. However, the wider context for the city's development was again changing with the global financial and economic crisis ushering in new more challenging times. Despite this, Parkinson argues that in 2010 it was clear that 'Liverpool had had a very good decade' even if a new 'age of austerity' had arrived (2019, p.96; pp.110-114). The following paragraphs examine the subsequent decade through the lens of the themes on the new English city regionalism outlined above.

4.2 The new city regional governance and Liverpool

A significant feature of the ECoC 2008 programme was that, whilst it was clearly centred on Liverpool, it also had a sub-regional dimension with other parts of the city region hosting events. This demonstrated that action branded under the name of the 'core' city of Liverpool could successfully generate benefits across the wider area. Of the Metropolitan County Councils created in the 1970s (Table 1 above) only one had featured the name of the core city in its title - 'Greater Manchester', with 'Merseyside' being used as the title of the conurbation on the river. This was to change in the 2010s with the creation of the Liverpool City Region CA in 2014.

Another significant development in local governing arrangements was the creation of an elected mayor for the core city of Liverpool. Referenda on the creation of elected mayors for the Core Cities in 2012 had resulted in only one positive result in Bristol. However, in Liverpool the city council voted to adopt the mayoral model in return for a City Deal in 2012 (Nurse, 2015). There are mixed views about the position of directly-elected 'Mayor of Liverpool'. The first incumbent, Joe Anderson of the Labour Party, has faced severe challenges to developing a forward-looking agenda due to the austerity imposed on the city in the 2010s, but there is also a recognition that the elected mayoral model has 'provided clearer leadership, engaged the private sector, built links with government and raised the profile of the city nationally and internationally' (Parkinson, 2019, p.104)ⁱ. Significantly the position was already in existence when the new Liverpool City Region (LCR) Combined Authority (LCRCA) was established in 2014, and the Mayor of Liverpool had been in place for five years by the time a City Regional Mayor was elected in 2017. The LCRCA is thus one of two where there is both a directly-elected mayor for the core city and the wider city region/CA area. This illustrates well Hodson et al.'s (2020, p.204) observation that 'Re-scaling to English city-regions involves some *re-design of governance* even while other pre-existing institutional structures and arrangements remain'.

The LCRCA comprises the six original local authority districts of the MCC - Liverpool, Knowsley, Sefton, St Helens, Wirral, and the additional area of Halton. Initially the democratic leadership of the CA was provided by a City Region Cabinet comprising the political leaders from each local authority district, with one of their number being elected as leader. When the LCRCA came into being on the 1st of April 2014, an immediate point of potential contention arose in the new governance of the city region. The Mayor of Liverpool, Joe Anderson, argued that his national profile as the mayor of a Core City meant that he should lead the City Region Cabinet. This was in contrast to the convention seen in other CAs where a non-core city district had taken on the leadership to ensure balance between the core and periphery (Nurse, 2015a). Though Anderson eventually backed down, and the LCRCA was initially led by Phil Davies, the leader of the neighbouring local authority of Wirral, this bumpy start did not ease a fractious relationship between the City of Liverpool and the wider city region (Nurse, 2015b).

The LCRCAs proceeded for the next year with its remit of delivering a transport and economic growth agenda, before the next step in the devolution agenda saw the adoption of bespoke 'Devolution Deals' in 2014 which transferred further powers over economic and transport budgeting, in return for the establishment of an elected 'Metro Mayor' for the city region (Sandford, 2019). Given that the LCR is a stronghold of the Labour Party, and that its candidate would be effectively ensured of victory, much attention was given to a primary process to select its candidate (Nurse and Sturzaker, 2020). As in other CAs the primary came down to a battle of local candidates versus those with a national profile, with Mayor of Liverpool Joe Anderson taking on two national Labour Members of Parliament - Luciana Berger and Steve Rotheram. Steve Rotheram was selected as the candidate and elected a LCR Mayor in 2017.

Much of Rotheram's early period in office was characterised by ongoing tensions between the core city and its periphery – not least the ambiguity and overlap between his role and that of the Mayor of Liverpool. Building upon his election manifesto (Rotheram, 2016) and areas of power, Rotheram sought to place a greater focus on the districts within the city region, championing a town centre fund and placing a heavy focus on a skills agenda particularly relevant to the peripheral districts. Elsewhere, he mirrored priorities of other candidates for elected CA mayoralities, appointing a Cycling Commissioner to champion the delivery of active travel, and also linking with other metro mayors including the Mayor of Greater Manchester, Andy Burnham, to champion strategic transport reform including pushing for the renationalisation of Northern Rail – which provides key links between Liverpool, Manchester, Leeds and beyond.

Reviewing the situation at the end of the decade, Parkinson emphasises that 'building identity, collaboration and trust in a city region is easy to aspire to and difficult to achieve' and that the LCR has made progress, with 'commitment and confidence' being 'higher'. Though he also observes that 'in terms of capacity to deliver and commitment to the city region, Liverpool had more to do' (2019, p.107).

4.3 Legitimacy and citizen 'buy-in'

As noted already, citizen engagement with the new city-regional governance is a key question which looms in the background of the city-regional movement in England. In Greater Manchester, it has been argued by some that the creation of this new arena (notably with links to spatial planning) has helped to disrupt (to an extent) established modes of 'public-private' regime-based city-regional governing (Hodson et al., 2020). Yet the GM city-regional mayoral elections in 2017 only attracted a turnout of 28.9% whilst in the LCR, Steve Rotheram may have been elected with 59% of the vote, but this was on a 26.1% turnout (Table 4) (the election for the Mayor of Liverpool in 2016 had a slightly higher turnout of 30.9%).

Authority	% Turnout LCRCA Mayoral Election, 2017	Rank Turnout in LCRCA Mayoral Election, 2017
Liverpool	28.6%	1
Wirral	27.8%	2
Sefton	26.9%	3
St. Helens	22.9%	4
Knowsley	22.7%	5
Halton	20.5	6
Overall	26.1%	-

Table 4 – Percentage and rank of turnout by local authority in Liverpool City Region Mayoral election

The figures in Table 4 also show that there is a certain 'fade' effect in terms of turnout from the core city of Liverpool (28.6%) to the peripheral area of Halton (20.5%). Overall, turnout levels were higher in the core city of Liverpool and the more coastal and central authorities of Wirral and Sefton, than in the eastern and southern parts of the city region. New elections for the offices of both Mayor of Liverpool and LCRCA Mayor are due to be held in May 2021. These will generate new figures on turnout which it will be instructive to compare with figures from earlier polls.

4.4 *Spatial selectivity and planning*

A task of governance at the city-regional scale, where a competence for spatial planning is attributed, is that of exercising spatial selectivity as regards the growth and kinds of development which will be sought in different parts of the territory (Hodson et al., 2020). This can be a complex process which brings together the city regional authorities, local authorities (typically with local planning competences), private developers, the public, and special interest civil society groups. The model of spatial planning at the city-regional scale in England varies - for example, the role of the GMSF is different from that of the Spatial Development Strategy (SDS) being prepared in the LCR. The GMSF and the West of England Spatial Plan prepared for the West of England CA area have the status of a joint local plan, are based on local plan legislation, and are notably able to address the often-controversial issue of Greenbelt allocations. The SDS for the LCR is based on the regulations for the London SDS and has been described as a 'lighter touch and strategic approach' (LCR Planner, interview with authors, March 2020). Given that the latest iteration of the SDS for London (the 'London Plan') was completed in 14 months, there is some optimism that this model will facilitate a less drawn out process than that experienced in GM.

The SDS model in the LCR still addresses housing numbers for the CA territory, but can also incorporate emergent themes like climate change, public health and social inclusion, providing a context for local plans and Supplementary Development Documents (SDPs) to address these issues. The LCRCA is also the only CA which has development management powers and is a statutory consultee on local planning decisions - though it is recognised such powers need to be deployed with sensitivity to the views of the constituent local authorities. The LCRA also has 'call in powers' to review local planning decisions, but these can only be used with the consent of the leader of the local authority concerned. The SDS can only be adopted by unanimity of the leaders of the six LCR local authorities and the CA mayor.

There was some reticence at first regarding city regional spatial planning, with the Mayor of the LCR being conscious of how politicised and complex the process had become in GM around the GMSF and the Greenbelt issue. Proposed revisions to the Greenbelt have also proved controversial in parts of the LCR (Dockerill and Sturzaker, 2019), but as they are still

dealt with as a local planning matter this has not yet impacted on the wider SDS process in the same manner. Among the suite of strategies that the CA can produce, the SDS is the only one with real regulatory weight which means it has been seen, alongside the power to control some funding, as one of the levers which the Mayor of the LCR can use to promote his manifesto.

Within the LCRA there are regular Chief Planners Meetings, to which neighbouring West Lancashire and Warrington are also invited. There are also meetings with authorities on the borders of the LCR reflecting Parkinson' (2019, p.106) observation that the city region is not 'hermetically sealed' and that 'many of its residents' work outside it and many who live outside travel to work in it. So far, the experience of renewed city-regional spatial planning has not generated the controversy seen in other CA areas around new plans, and seems to have succeeded in demonstrating its relevance to key political figures. It will be interesting to witness to what extent it achieves a higher profile in subsequent elections for the Mayor of the LCR, and whether the consensual atmosphere which seems to reign at present around strategic planning in this stereotypically fractious city region will be maintained once the SDS begins to exert more influence over spatially selective decisions. Previously, for example, there were some tensions, around the strategic Liverpool Waters mixed-use development scheme located in Liverpool when attempts by the leaders of the LCR LEP to intervene in the process were firmly rebuffed by Mayor Anderson, citing the primacy of Liverpool City Council's planning powers (Nurse, 2015a).

4.5 *Austerity*

Despite the progress in institution building outlined above and the resources brought by city and devolution 'deals' to Liverpool and the LCR, no account of these developments can ignore the 'lost decade' (Toynbee and Walker, 2020) of austerity which has marked the country and city since 2010. Cuts to local budgets precipitated the turbulent politics of Liverpool in the 1980s, pushing it to 'the brink' of political and financial collapse (Parkinson, 1985), and in the 2010s 'it can be argued that the impact of the government's cuts on the city's finances has been greater and more difficult to manage than those faced by the Militant Labour council in the 1980s' (Parkinson, 2019, p.110). The facts bear out such analysis, as 'When adjusted for

inflation, Liverpool City Council has £436 million less to spend per year now than it did in 2010, which equates to a 63 percent cut in its overall budget' (Liverpool City Council, 2020). The 'Government's own figures show Liverpool's Spending Power has reduced by a cumulative 21.3% in 2019/20 compared to 2010/11' when 'average reduction for all English authorities over this period was 10.2%' (Liverpool City Council, 2020). Overall, Liverpool has had the biggest cut in its funding of all the Core Cities and in the LCR 'this cut was matched by Knowsley. So the two city region authorities with that were the highest ranked in the Index of Multiple Deprivation received disproportionately heavy cuts to their funding from central government' (Parkinson, 2019, p.110). Set against the scale of such cuts and those to come, in 2020, Liverpool City Council alone, needed to find another £19 million in savings and a further £25 million in 2021. Since 2010 it has also lost more than 2,500 staff (Liverpool City Council, 2020). The additional £30 million annually for 30 years for the wider LCR under its 2016 'Devolution Deal' to be added to repackaged existing funding seems modest indeed in the face of such deep cuts.

4.6 *The European Question*

The rising profile of city regions in England is part of the wider experience of city-regional development and governance in Europe (Demazière et al., 2020). But in Liverpool the 'European question' has a particular salience, being bound-up with the identity and history of the city in the latter decades of the 20th Century, and forming a cornerstone of the narrative of how the city fought back against the doctrine of 'managed decline' discussed by some at the highest levels of the Thatcher regime in the 1980s (BBC News, 2011). The EU invested significant resources into Merseyside. The 2000-2006 EU Objective One programme, for example, saw £840 million (Network for Europe, n.d.) flow into the area, which with 'match funding' gave a total investment of over £1 billion over 6-7 years (compare this with LCRCA's devolution 'deal' worth £900 million *over thirty years*). Parkinson (2019, p. 65) concludes that for a place like Liverpool 'the sheer scale of EU Objective 1 funding caused a step-change in its confidence and gave its leaders the stability of funding over a long period of plan for change'. As a result, 'Huge progress was made in a relatively short space of time' and it 'moved from a vulnerable post-imperial to a stronger more diverse economy embracing knowledge, science and innovation, culture and tourism'. But the European question is about

far more than funding levels and the economy for Liverpool, but about a renewal of governance culture, confidence, and a distinct identity, and it came as little surprise when the city voted heavily to stay in the EU in the 2016 EU referendum (Nurse and Sykes, 2019).

8.0 Conclusion

The evolution of city regionalism in England is bound-up with successive cycles of rescaling of sub-state government which have sought to provide institutions at the 'right scale' and with the right powers, but which have often stalled due to lack of finance, or been reversed by subsequent national legislative changes and policies. It provides an operative example of Jonas and Moisiu's (2018, p.351) contention 'that city regionalism is becoming an important medium through which the state exercises its powers in the 21st century'. The case of the Metropolitan Councils which existed from the 1970s into the 1980s illustrates this well, demonstrating the mutable quality of institutions and scales of government in a polity without a constitutionally established structure of governance levels. A scale of government can be brought into being, or abolished, quickly with little, or no meaningful consultation, through an Act of Parliament, or executive action, often depending on the political and ideological agenda, of the government of the day. The experiment in English regionalisation in the 1990s and 2000s, was summarily terminated thus by an incoming government in 2010.

In the past decade England's experimentation with sub-state governance settled on the scalar fix of sub-regional territories such as city-regions, argued to better reflect 'functional' geographies (e.g. Travel to work areas; transport; housing and labour markets) than more expansive regional territories. Again, state strategy has promoted this, but the powerful bottom-up dynamics which have also been at play at different times, and in different places must also be acknowledged. These have drawn on legacies stretching back to the 1990s which saw varied efforts by local authorities, business interests and others to work together to create metropolitan/city regional governance capacity – for example, the 'Manchester model' of city-regional cooperation made it an exemplar for others, and ensured that city region was at the front of the queue for new institutional arrangements in the 2010s.

Other drivers of devolution to English city regions include the economic objective of addressing regional imbalances in England (the 'North-South' divide and its variants). The new structures are the product of an ongoing process of searching for the next 'larger than local' 'spatial fix' to resolve these issues. Today inter-municipal cooperation is being advanced through Combined Authorities (CAs), some led by elected Mayors. These are able to negotiate devolution 'deals' with central government. In the north of England such institutional change has taken place against the backdrop of the Northern Powerhouse initiative. Yet though sub-state devolution is still on the agenda in England, it also faces some competition from more centrally driven initiatives such as the 'national' (UK) industrial strategy and its requirement for Local Industrial Strategies which reflect its themes (Nurse and Sykes, 2020). That the latter may now apparently be shelved despite the effort and resources invested in their development (Hills, 2021) is again an illustration of how state centralism calls the shots in the English/UK polity and can reshape policy agendas and resource allocations overnight.

As noted earlier, Rodriguez-Pose and Gill (2003, p.334) contend that it is important to consider 'subnational legitimacy' when analysing processes of devolution. Whilst the devolution agenda ostensibly dovetails well with the spatial economic concerns and initiatives discussed above and has a clear legislative basis, it remains uncertain how, or whether, it will reinvigorate citizen engagement in the face of desperately low levels of voter participation in democratic processes at sub-state scales. The turnouts for the first elections for CA mayors in 2017 - when fewer than a third of eligible voters participated (Fig. 1) - suggest there is some way to go in securing the sought-after citizen 'buy-in' to the new sub-state scalar settlement. Centralist tendencies in the 'Brexit' state (Ward, 2020), and accusations that the allocations of funding made in lieu of lost EU investments in different territories are politically motivated (Bounds and Smith, 2021), may yet further undermine the sense that meaningful authority and autonomy is vested at the devolved scale.

The new structures also need to address the issue of spatial selectivity, and the question of how to reconcile the interests of complex and diverse territories at the intra-city regional level - for example, 'core city' and wider 'city regional' agendas. The return of strategic spatial planning in some city regions provides one possible arena of tension here - for example, if CAs take decisions from a perspective of a strategic/collective wider territorial interest, such as

releasing Greenbelt land for housing, or planning infrastructure development, which particularly affect and/or prove unpopular in certain sub-territories of a city region. It is the attribution of powers over greenbelt allocations to the GM city region which has led to planning there being perceived as a higher stakes and hence more political affair than in the LCRA. How spatial planning is configured at city regional level thus may not only define parameters of possible action as regards planning agendas, but also influence the wider nature of debate and spatial governance processes.

Finally, echoing previous studies and the debates of the 1990s and 2000s around New Regionalism and the importance of local specificity in institutional emergence (Section 3.2 above), the case of Liverpool and the LCRA reminds us that configurations of the new city-regional governance are also strongly shaped by place-based, historically rooted factors. Local political cultures differ from place to place making it hard to always 'read off' changes simply from wider structural forces and state strategy. For example, the new CAs in the proximate city regions of Liverpool and Manchester illustrate the influence of institutional and political management differences within the same polity. In the LCR there are two executive Mayors (for the core city of Liverpool and the LCR) who can both claim an electoral mandate, creating scope for in-built competition. Differing institutional configurations and competences at a more local level thus interact to generate particular political and policy dynamics. Ultimately, whilst 'rescaling' is often considered from the perspective of wider structural 'exogenous' political-economic shifts and state strategies, we should not forget that the places it affects have their own distinctive contexts and histories which shape the material practices of rescaling as it occurs 'on the ground'.

References

- Alexander, A (2009) *Britain's New Towns: Garden Cities to Sustainable Communities*. Taylor and Francis
- Beel, D, Jones, M and Rees Jones, I (2018) Elite city-deals for economic growth? Problematizing the complexities of devolution, city-region building, and the (re)positioning of civil society. *Space and Polity* 22: 307-327
- Billing, C, McCann, P and Ortega-Argilés, R (2019) Interregional inequalities and UK sub-national governance responses to Brexit. *Regional Studies* 53: 741-760
- Bounds, A. and Smith, A. (2021) [Levelling Up Fund bias in favour of Tory seats 'pretty blatant', *Financial Times*](#), 05 March 2021,
- Briggs, A (1963) *Victorian Cities*,. London: Odhams Press Limited
- Burch, M. & Holliday, I. (1993) Institutional emergence: The case of the north west region of England, *Regional & Federal Studies*, 3:2, 29-50, DOI:10.1080/13597569308420870
- Caller, M. (2021) *Liverpool City Council Best Value Inspection - December 2020-March 2021*, Ministry of Housing, Communities and Local Government, <https://www.gov.uk/government/publications/liverpool-city-council-best-value-inspection-report>
- Cocks, MA (2010) Institutional thickness and Liverpool exploration of a methodology. University of Liverpool
- Couch, C (2017) *City of change and challenge: urban planning and regeneration in Liverpool*. Routledge
- Couch, C, Sykes, O and Börstinghaus, W (2011) Thirty Years of Regeneration in France, Germany and Britain. *Progress in Planning* 75: 1-52
- DCLG (2010a) Functional Economic Market Areas. London
- DCLG (2010b) Letter to Local Authority Leaders and Business Leaders. In CLG (ed). London
- DCLG (2011) Unlocking Growth in Cities. London: DCLG
- Demazière, C, Desjardins, X. and Sykes, O. (2020) *La gouvernance des métropoles et des régions urbaines - Des réformes institutionnelles aux coopérations territoriales*, PUCA.
- Demazière, C and Sykes, O (2019) The Rise of the Metropolitan City Region? Exploring the Establishment. *Foregrounding Urban Agendas: The New Urban Issue in European Experiences of Policy-Making*: 185
- Dockerill, B and Sturzaker, J (2019) Green belts and urban containment: the Merseyside experience. *Planning Perspectives*: 1-26
- Fitzgerald, T (2017) Greater Manchester's mayoral candidates row over region's housing masterplan. *Manchester Evening News*. Manchester
- Florida, R (2004) *The Rise of the Creative Class*. Boston: Basic Books
- Frost, D and North, P (2013) *Militant Liverpool a City on the Edge*. Liverpool: Liverpool University Press
- García, B (2010) Media impact assessment (Part II). Evolving press and broadcast narratives on Liverpool from 1996 to 2009
- Garcia, B, Melville, R and Cox, T (2010) Creating an Impact: Liverpool's year as Capital of Culture. Liverpool: Impacts08
- Hall, P (2007) Evolution of Strategic Planning and Regional Development. In Dimitriou, HT and Thompson, R (eds) *Strategic Planning for Regional Development in the UK: A review of principles and practices*. London: Routledge
- Halliday, J and Walker, A (2020) 'Towns Like Ours Get Forgotten': Worksop residents give verdict on the budget. *The Guardian*.
- Harvey, D (1989) From Managerialism to Entrepreneurialism: The Transformation in Urban Governance in Late Capitalism. *Geografiska Annaler. Series B, Human Geography* 71: 3-17
- Haughton, G, Deas, I, Hincks, S and Ward, K (2016) Mythic Manchester: Devo Manc, the Northern Powerhouse and rebalancing the English economy. *Cambridge Journal of Regions, Economy and Society*
- Hill, J. (2021) [Exclusive: Concern over apparent shelving of local industrial strategies | Local Government Chronicle \(LGC\)](#), *Local Government Chronicle*, 10 March, 2021.

- Hodson, M, McMeekin, A, Froud, J and Moran, M (2020) State-rescaling and re-designing the material city-region: Tensions of disruption and continuity in articulating the future of Greater Manchester. *Urban Studies*: 0042098018820181
- Hunt, T (2005) *Building Jerusalem: The Rise and Fall of the Victorian City* London: Phoenix
- Jenkins, S (2015) The secret negotiations to restore Manchester to greatness. *The Guardian*.
- Jessop, B (1990) *State Theory: Putting the Capitalist State in its Place*. Cambridge: Polity Press
- Jones, KE, Lord, A and Shields, R (eds.) (2015) *City-Regions in Prospect? Exploring the Meeting Points Between Place and Practice*, Canada: McGill-Queen's University Press
- Knott, J. (2021) 'Favouritism' in levelling up grants shows declining standards, says anti-corruption body, *Local Government Chronicle*. 30 March 2021. ['Favouritism' in levelling up grants shows declining standards, says anti-corruption body | Local Government Chronicle \(LGC\) \(lgcplus.com\)](#)
- Lovering, J. (1999), Theory Led by Policy: The Inadequacies of the 'New Regionalism' (Illustrated from the Case of Wales), *International Journal of Urban and Regional Research*, 23:2, 379-395. <https://doi.org/10.1111/1468-2427.00202>
- Lowndes, V and McCaughie, K (2013) Weathering the perfect storm? Austerity and institutional resilience in local government. *Policy & Politics* 41: 533-549
- MacLeod, G. and Jones, M. (2001) Renewing the geography of regions, *Environment and Planning D: Society and Space*, volume 19, 669-695. DOI:10.1068/d217t
- Mance, H and Bounds, A (2016) Theresa May shifts focus from 'Northern Powerhouse'. *Financial Times*.
- Moisio, S. & Jonas, A.E.G. (2018). City-regions and city-regionalism. In Paasi, A. Harrison, J. & Jones, M. (eds.) *Handbook on the Geographies of Regions and Territories*. 285–297. Edward Elgar Publishing, Cheltenham.
- Murden, J (2006) City of Change and Challenge!: Liverpool since 1945. In Belchem, J (ed) *Liverpool 800: Culture, Character and History*. Liverpool: Liverpool University Press
- Nurse, A (2012) *Delivering Effective Local Public Services: The Case of Local Area Agreements*. Liverpool: Liverpool University Press
- Nurse, A (2015a) Bridging the Gap? The role of regional governance in delivering effective public services Evidence from England. *Planning Practice & Research* 30: 69-82
- Nurse, A (2015b) Creating the north from the sum of its parts? Research questions to assess the Northern Powerhouse. *Local Economy* 30: 689–701
- Nurse, A and Fulton, M (2017) Delivering strategic economic development in a time of urban austerity: European Union structural funds and the English city regions. *Local Economy* 32: 164-182
- O'Brien, D and Matthews, P (2015) *After Urban Regeneration*. Bristol: Policy Press
- Parkinson, M (1985) *Liverpool on the Brink*. Hermitage: Policy Journals
- Parkinson, M (2019) *Liverpool Beyond the Brink*. Liverpool: Liverpool University Press
- Parkinson, M, Evans, R, Meegan, R and Karecha, J (2016) *The State of Liverpool City Region Report: Making the Most of Devolution*. Liverpool: University of Liverpool and Liverpool John Moores University
- Parkinson, M, Hutchins, M, Simmie, J, Clark, G and Verdonk, H (2004) *Competitive European Cities: Where do the Core Cities Stand?* London: ODPM
- Pidd, H (2020) Sunak vows budget boost for regions – but not everyone is happy Liverpool and Hull left wanting as chancellor announces infrastructure cash injection. *The Guardian*.
- Pidd, H. and Wolfe-Robinson, M. (2021) [Liverpool mayoral race in chaos as Anna Rothery sues Labour, The Guardian](#), 05 March 2020
- Pugalis, L (2011) Look before you LEP. *Journal of Urban Regeneration and Renewal* 5: 7-22
- Pugalis, L and Fisher, B (2011) English regions disbanded: European funding and economic regeneration implications. *Local Economy* 26: 500-516
- Rae, A (2013) English urban policy and the return to the city: A decade of growth, 2001–2011. *Cities* 32: 94-101

- Roberts, P, Thomas, K and Williams, G (1999) *Metropolitan Planning in Great Britain – A comparative study*. London: Jessica Kingsley Publishers
- Rogers, R (1999) *Toward an Urban Renaissance*. London
- Rotheram, S (2016) *Our Future Together*. Wirral: Labour Party
- Sandford, M (2015) *Directly Elected Mayors*. London: House of Commons Library
- Sandford, M (2019) *Local Administrative Boundaries in Britain*. UK Parliament: London
- Sassen, S (1991) *The Global City*. Princeton: Princeton University Press
- Schmidt, V. (2013), 'Democracy and legitimacy in the European Union revisited: input, output and 'throughput''. *Political Studies*, 2013, Vol. 61, 2-22
- Shaw, D and Sykes, O (2016) *Liverpool Story: Growth, Distress, Reinvention, and PlaceBased Strategy in a Northern City. Transforming Distressed Global Communities: Making Inclusive, Safe, Resilient, and Sustainable Cities*
- Shaw, K and Robinson, F (2007) 'The End of the Beginning'? Taking Forward Local Democratic Renewal in the Post-Referendum North East. *Local Economy* 22: 243-260
- Sturzaker, J and Nurse, A (2020) *Rescaling Urban Governance – Planning, Localism and Institutional Change*. Bristol: Policy Press
- Sykes, O, Brown, J, Cocks, M, Shaw, D and Couch, C (2013) A City Profile of Liverpool. *Cities* (Published Online)
- Taylor, Z (2019) Pathways to legitimacy. *Planning Theory* 18: 214-236
- Tewdwr-Jones, M and Allmendinger, P (2007) Regional institutions, governance and the planning system. In Dimitriou, HT and Thompson, R (eds) *Strategic Planning for Regional Development in the UK: A review of principles and practices*. London: Routledge
- Thorp, L. (2020) [Joe Anderson to stand aside as Mayor of Liverpool: live updates and reaction on what next for our city, Liverpool Echo](#), 10 December 2020
- Toynbee, P and Walker, D (2020) *The Lost Decade 2010-2020 and What Lies Ahead for Britain*. London: Faber
- Turner-LE., B. and Thorp, L. (2020) [Mayor of Liverpool Joe Anderson arrested along with four others in police probe. Liverpool Echo](#), 10 December 2020.
- Wilks-Heeg, S and Clayton, S (2006) *WHOSE TOWN IS IT ANYWAY? THE STATE OF LOCAL DEMOCRACY IN TWO NORTHERN TOWNS*. York: Joseph Roundtree Charitable Trust
- Ward, W.J. (2020) Reasserting the Centre: The Brexit Doctrine and the Imperative Mandate in British Politics, *Parliamentary Affairs*, gsaa015, <https://doi.org/10.1093/pa/gsaa015> Published: 29 July 2020
- Wise, MJ (1969) The Future of Local Government In England: 'The Redcliffe Maud Report'. *The Geographical Journal* 135: 583-587

ⁱ The Mayor of Liverpool, Joe Anderson, was arrested in December 2020 as part of a Police investigation into building contracts in the city and subsequently stepped-down (Turner-LE and Thorp, 2020; Thorp, 2020). The contest to secure the Labour Party nomination to stand for election as Mayor of Liverpool in 2021 has also been mired in political controversy (Pidd and Wolfe-Robinson, 2021) and in March 2021 a critical government inspector's report into aspects of governance and management at Liverpool City Council was published (Caller, 2021).